

PicturesToExe Deluxe Version 5.5

The User`s Guide

Contents

Introduction.....	2
Main features.....	3
System Requirements.....	4
What`s New in PicturesToExe.....	5
Questions.....	6
Problems.....	8
How to.....	10
Quick Start - PicturesToExe.....	12
Quick Start - VideoBuilder.....	13
Main Window Menu.....	14
Main menu.....	15
File menu.....	15
Project Menu.....	16
Slide Menu.....	16
View Menu.....	17
Help Menu.....	18
The Directory Tree of Files.....	19
Preview Window for a Selected Slide.....	20
The Slide List.....	21
The Control Buttons.....	22
The Status Bar.....	22
Customize Slide.....	23
Timing.....	23
Background.....	24
Advanced Options.....	25
Effect Tab.....	25
Music Tab.....	26
Objects and Animation.....	27
Main Window.....	27
Properties Tab.....	29
Common Tab.....	30
Animation Tab.....	31
Linearity.....	32
Object List.....	33
Timeline Animation.....	33
How to create Pan effect.....	35
How to create Zoom effect.....	36
Project Options.....	37
Main Tab.....	37
Advanced Tab.....	39
Music Tab in Project Options.....	40
Comments Tab.....	41
Screen Tab.....	42
Aspect Ratio.....	43
Effects Tab.....	49
Messages Tab.....	50
Timeline Operation.....	51
Video Options.....	55
Video Builder (DVD video disc).....	55
Create AVI video file.....	63
Hotkeys.....	65
Glossary of Necessary Terms.....	67
Slide Shows Created in PicturesToExe.....	73
Contacts.....	74

Introduction

PicturesToExe Deluxe is the program, which can help you to create splendid slide shows, consisting of almost limitless number of pictures in EXE file or SCR format (screensaver). The interface of **PicturesToExe Deluxe** is very easy in use, both amateur PC users and professional photographers and people of all specialities can work in this program without any difficulties.

PicturesToExe Deluxe supports different formats such as JPG, GIF, BMP and EXE, which is the main for this program. A slideshow in EXE format can be reproduced on any computer under Windows XP, Vista, 95, 98, Me, 2000, 2003. No additional program (even PicturesToExe itself) is needed to run a finished slide show, except a produced EXE file.

You can place any objects (images, text labels with drop shadows) on a slide and customize complex animation. It's either possible to use various cinematographic transition effects between slides, to add background music, sound and text comments to a slide. You can also synchronize slide shows to music. Slide show has a high picture quality and a very smooth playback of Pan/Zoom effects you have ever seen.

VideoBuilder in **PicturesToExe Deluxe** edition allows you to burn DVD video disc with your slide shows quickly and easily. You can adjust menu and many other parameters of your DVD disc. You cannot but notice one more advantage, **PicturesToExe** gives you an opportunity to create AVI video file. If you think, it's necessary you can protect your slide show with password and assign expiration date. Burned in **PicturesToExe** DVD video disc can be played on any DVD player, PC or MAC.

Main features

- PicturesToExe produces a single EXE file which contains all pictures and music.
- PicturesToExe Deluxe can burn DVD-Video disc with slide shows.
- Pan/Zoom/Rotate effects for images.
- A powerful editor of objects of the slide with possibility to adjust complex animation.
- You can add buttons or text labels with drop shadows and glows to a slide.
- Cinematographic transition effects between slides.
- The show of slides can be exactly synchronized to music on the timeline with waveform.
- Slide show has a built-in player for high quality MP3 and OGG playback. It also supports WMA, WAV and MIDI music playback.
- Ability to create a screensaver.
- Navigation bar in the slide show.
- An easy solution of creating greeting cards.
- Ability to create AVI video file.
- Supports a multi-select and visual drag-n-drop between the file panel and the slide list.
- Supports sound comments to the slides (MP3, OGG, WMA or WAV).
- Images can be in JPEG, PNG, GIF or BMP format.
- Ability to rotate pictures (lossless algorithm).
- Every slide can be individually customized with its own time, effect, background, and etc.
- Supports English, Russian, Netherlands, Italian, Swedish, Hungarian, Slovenian, German, Catalan, French, Spanish, Arabic, Romanian, Chinese, Brazilian Portuguese, Danish, Czech, Ukrainian, Slovak languages.

System Requirements

For slide shows with Pan/Zoom effects:

PC with 1.4 GHz CPU, 256 MB of system memory, video card with 128 MB of video memory. Windows XP, Vista, 2000, 2003, Me, 98 or 95. DirectX 8.1 or later.

For slide shows created with simple effects:

PC with 500 Mhz CPU, 64 Mb of system memory, any video card. Any version of Windows.

System requirements for PicturesToExe and VideoBuilder:

PC with 500 Mhz CPU, 64 Mb of system memory, any video card. Windows XP, Vista, 2000, 2003, Me, 98, 95. Note: burning of DVD-Video discs in VideoBuilder requires Windows XP, Vista, 2000.

What's New in PicturesToExe

- Encoding of DVD-Video disc (and AVI) works in 2-4 times faster now due to the optimization of dual-core CPUs and using of hardware acceleration for video post-processing (if modern video card installed). Exactly the same video quality as in previous version.
- You can choose a number of items per page in DVD menu.
- MPEG2 files can be added to a project. For example, you can encode your slideshow(s) to MPEG2 video file(s) and then use it again in the new projects without re-encoding it again.
- Music for DVD menu (with "Fade in" and "Fade out" parameters).
- Color adjusting of DVD menu (Hue, Saturation and Lightness). It allows to modify the view of DVD menu and to find your own individual style very quickly.
- Adjusting of background image parameters (Tile, Stretch, Fit).
- Supports all kinds of AVI files imported to the project (including AVS video file scripts).
- A new tab in the Project options window - "Program" (customizing priority mode for encoding and temp folder).
- More exact calculation of required disc space.
- "Wait for a key press to show next slide" option in Project options is available again. You can overwrite global value in properties of a slide.
- Adjusting of colors for Text/Button objects in hover and pressed states activated again.
- PicturesToExe starts much faster now.
- Timeline window remembers the current position of a cursor and the selected keypoint when you switch between the Timeline window and the main window of PicturesToExe.
- Supports multi-line default text comment for all slides (Project options / Comments tab).
- Visual improvements in Music tab of Project options and Customize slide windows. You can visually re-arrange files in the playlist.
- The Slide list shows a hint what to do, when no slides are added.
- Fixed bug with too large controls in Drop shadow dialog when 120 dpi graphics mode used.

Questions

What are the system requirements for slide shows?

For slide shows with Pan/Zoom effects:

PC with 1.4 GHz CPU, 256 MB of system memory, video card with 128 MB of video memory, Windows XP, Vista, 2000, 2003, Me, 98 or 95, DirectX 8.1 or later.

For slide shows created with simple effects:

PC with 500 Mhz CPU, 64 Mb of system memory, any video card, any version of Windows.

How can I register PicturesToExe?

Please open this page: <http://www.wnsoft.com/apr>

I bought PicturesToExe vX.xx. Should I pay again for next versions?

No, you needn't pay for PicturesToExe again and you can use all future versions of PicturesToExe free of charge. Your license for VideoBuilder in PicturesToExe Deluxe is intended for two years and you can buy "Upgrade to Deluxe" again to continue using VideoBuilder and being able to burn DVD-Video discs.

I don't have an opportunity of downloading the program from the Internet. How can I purchase it on CD?

You can purchase CD with PicturesToExe from Barry's Beckham web site:

<http://www.beckhamdigital.co.uk/digitalav/pte/pte.htm>

What screen resolution is needed to view the presentation?

You can use any resolution: 800x600, 1024x768, 1280x1024 or higher. A slide show in EXE file uses a current display mode. All elements of a slide scale are visible automatically and proportionally at any display mode.

Will PicturesToExe create presentations that can be viewed on Apple Macintosh computers (Mac OS X)?

You can't run EXE file with a slide show on MacOS. But you can burn DVD-Video disc in PicturesToExe Deluxe and additionally put EXE files of slide shows. Thus DVD-disc will play with highest quality on PC (as EXE file) and as DVD-Video on Mac computer.

Can I put my slide shows (EXE files) created with PicturesToExe to CD or DVD discs?

Yes, of course!

How many slides can I include into my slide show?

Up to 20000 slides (unregistered version limits to 10 slides).

What is the largest size that the generated EXE file can be?

The resulting EXE file cannot be larger than 2100 MB (2 GB).

What additional files are needed to run the EXE file of the slide show on my computer or any other computer?

No other files are necessary to run the EXE file.

PicturesToExe v4.48 had the transition from/to desktop effect. I can't find this effect in PicturesToExe 5. Why?

We removed "Show transition effect from/to desktop" options in a new version of PicturesToExe for two reasons:

This effect doesn't work correctly under Windows Vista due to error in Windows Vista. Slide shows created in v4.48, in which this option is used, will work as though they are created without these options.

There is a problem even with Windows XP. Since version 5.0 we use a fullscreen hardware accelerated display mode (for maximally smooth playback of Pan/Zoom effects) and these options could work incorrectly on some video cards.

Those are the reasons why we decided to remove these options.

Where can I download the examples of slide shows created with PicturesToExe?

You can find our slide shows at <http://www.wnsoft.com/download.htm> and a lot of slide shows created by users of PicturesToExe at <http://www.beechbrook.com/pte>.

Problems

I lost PicturesToExe (PC crash etc.). How can I turn the program back without being charged again?

You can download the latest version of PicturesToExe from:

<http://www.wnsoft.com/apr/apr-deluxe.zip>

You can request a new register key at the technical support web page:

<http://www.wnsoft.com/support.htm>

Autorun doesn't work.

There are many reasons why it may not work:

1. Probably CD autorun is forbidden in Windows system.
2. These inf file and slide show exe file should be in the root of the CD.

I have launched PicturesToExe, but the interface language looks unfamiliar. How can I switch English (or another) language?

Open the fourth menu from the top panel of PTE window. Select the third line and then switch the necessary language from the list.

When I try to open/save one of my projects, it says that the images are not found.

This problem may be caused if you remove or replace any files (images, music), while making a project or after saving a project. You shouldn't remove or replace any files used in a show from their original folders, because the program keeps in memory each file's path in order to find it next time when you open your project.

When I create a show, my images look normal, but when I play a created presentation, color gamma of these images is much brighter.

By default we use a hardware accelerated screen mode in v5.00. It allows us to reach ideally smooth Pan/Zoom effects. This mode, used in Media Center, Chess Game and Aero Glass uses interface in Windows Vista.

Unfortunately drivers of ATI video cards for Windows XP contain a bug. It ignores color gamma settings in this fullscreen mode which you adjust for the desktop. ATI has already fixed this bug for their drivers for Windows Vista and they also promise to fix it for Windows XP later.

As a temporal solution go to Project options -> Screen tab and uncheck "Use hardware acceleration" option. But if you use Pan/Zoom effects it will not play smoothly enough.

You can complain to ATI and ask them to fix this bug as soon as possible:

<http://support.ati.com/ics/survey/survey.asp?deptID=894&surveyID=486&type=web>

Zoom/Pan transitions are "jerky" and not smooth.

1. Make sure that your video card satisfies the requirements of these effects.
2. Perhaps, the size of your images is too big. Try to reduce it and preview the show once again. This is the link to our free program, which helps you to reduce the sizes of all images at once:

<http://www.wnsoft.com/soft/MultiResize.exe> (216 KB)

3. If the show still has a bad quality, please, report about it to the technical support. We would be grateful, if you indicate your computer configuration and write a detailed problem description in your ticket: <http://www.wnsoft.com/support.htm>

I lost pictures which were used in a show. How can I turn them back?

You can't extract images from exe files. We refused to add such ability to the program, because many customers don't want other people to be able "stealing" their copyrighted pictures. We can only advise you to make screen shots of the images and save them.

Slide show hangs on a certain slide, but music continues playing.

Please, check if some of your slides have customized settings: right mouse click on a slide and select Customize Slide menu item.

Grabbed music "stutters".

PicturesToExe is very sensitive to any errors in audio files, which may appear while grabbing or converting.

We can advise you to use "Exact Audio Copy" program to grab music from CDs. This program is free.

DVD burning can't be completed correctly: the progress stops, Video Builder says the disk is full, recorded disc doesn't play in a DVD player.

1. Make sure that your disc is not full.
 2. Do you use high quality DVD discs? Please, try to use another disc and try to record once again.
- If the program does not respond or you face any error messages, please, report to technical support service.

I burned DVD-video disc, but it doesn't play smooth.

Before burning DVD-video disc, check TV system parameters in the project options. If you live in the USA, Canada or Japan, choose NTSC. If you live in Europe, you should choose PAL/SECAM.

How to...

How to upgrade PicturesToExe to Deluxe edition? I want to burn DVD-Video discs with my slide shows.

If you bought PicturesToExe v4.48 or earlier or you bought PicturesToExe Standard edition you can upgrade to Deluxe edition and use VideoBuilder to burn DVD-Video discs:

<https://www.regnow.com/softsell/nph-softsell.cgi?item=1639-3&ordertype=Upgrade%20to%20Deluxe>

How can I make my slide show (EXE file) to start just after inserting CD or DVD discs into the drive?

Create new document with the name "autorun.inf" using any text editor (e.g. Notepad) and write the following text:

```
autorun]
```

```
open=YourSlideshow.exe
```

```
icon=YourSlideshow.exe
```

(Note: instead of "icon=YourSlideshow.exe" you can write "icon=YourIcon.ico") where "YourSlideshow.exe" is a file name of your slide show. This file ("autorun.inf") must be copied to the root of CD or DVD disc with your slide shows.

EXE file of my slide show is too large. How can I reduce the size of my EXE file?

- Reduce your JPEG images to 1024x768 or 1280x960, 160-500 KB
- Use MP3 files for background music (don't use WAV music files)

You can control the size of your slide show, watching the status bar at the bottom of the main window (3rd section - 'EXE file - 4 MB')

How can I calculate the size of a produced EXE file with my slide show?

The size of your EXE file with slide show is 280 KB plus size of your files (images and music).

How can I synchronize several groups of slides with a certain audio track?

To synchronize a group of slides with an audio track, do the following steps:

select the necessary number of slides, drag the last one and set it exactly under the blue line, which shows where the last track ends and the next one begins. Keeping these slides selected, click <Timed Points> button and select "Arrange selected points". As a result, all these slides on that area will be set on equal distance one from another. Then add next group of slides to the time line: click <Insert slide> button, select necessary images and click <Add> button. And do the same steps with them.

How can I fade music in the end of each track?

PicturesToExe doesn't have audio editing abilities. You can make fade effects with any audio editor and then add this track to a slide show.

I want to add one or more MP3 music files to my slide show as background music.

Go to Project options, Music tab and add music files (MP3, WMA, OGG, WAV, MID) which will play in your slide show. Note: after the last file ends, the first file will be played again and so on.

How can I create an independent video file (not on CD/DVD) and save it on my hard drive?

You can create a custom AVI file:

Click <Video> button, check "Create custom AVI file", then select audio and video codecs: <Audio codec> and <Video codec> buttons. You can choose any video codec, but "PicturesToExe video codec". You can select codecs from the lists or use your own codecs. Then click <Create AVI> button and save your file.

How can I make a screensaver and set it for my computer?

Create a slide show as a screen saver. Save it in any folder of your computer. Make a right click on it and select menu item to set it as a screen saver for your PC.

How can I transfer my PicturesToExe to another computer?

You can copy PicturesToExe to any removable media (CD, flash memory device etc.) and then install to another PC. Then register it with your current key. If you don't have back-up copy of your registration key, you can always turn to the technical support, and you will be given a new key:

<http://www.wnsoft.com/support.htm>

How can I avoid black strips at the top and at the bottom of the screen in my slide show?

If you watch any wide screen slideshows (say 16:9) on usual LCD display at 1024x768 (4:3), you will see black strips at the top and the bottom parts of the screen. If you don't want to see these black strips and you would like to use all square of your display for a slideshow, use "Pan and Scan" feature of PicturesToExe. Create **MyShow.bat** file in Notepad and type:

"MyShow.exe" - Cover

See the result below:



It works for all EXE files with slideshows created in version 5.0 and later. You can distribute a ZIP archive with your slideshow with EXE file and additionally include **.bat** file for fullscreen version:

MyShow_Widescreen.exe

MyShow_PanAndScan.bat

Quick Start - PicturesToExe

If you want to make the slide show, do the following steps:

1. Open **PicturesToExe**;
2. Open the necessary folder with the images from the **directory tree of files**;
3. **Add** the selected images to the **slide list**;
4. Then **Customize** slide and add **Object** and **Animation** to it, if you wish, in the preview window;
5. After that, customize your slide show in the **Project Options**;
6. If you want to preview your slide show, click the button **Preview** and after that make some changes, if necessary.
7. Your last step is to create the **EXE file** with your slide show by clicking the button **Create**.

That is the way for creating the simplest slide show and EXE file.

Quick Start - VideoBuilder

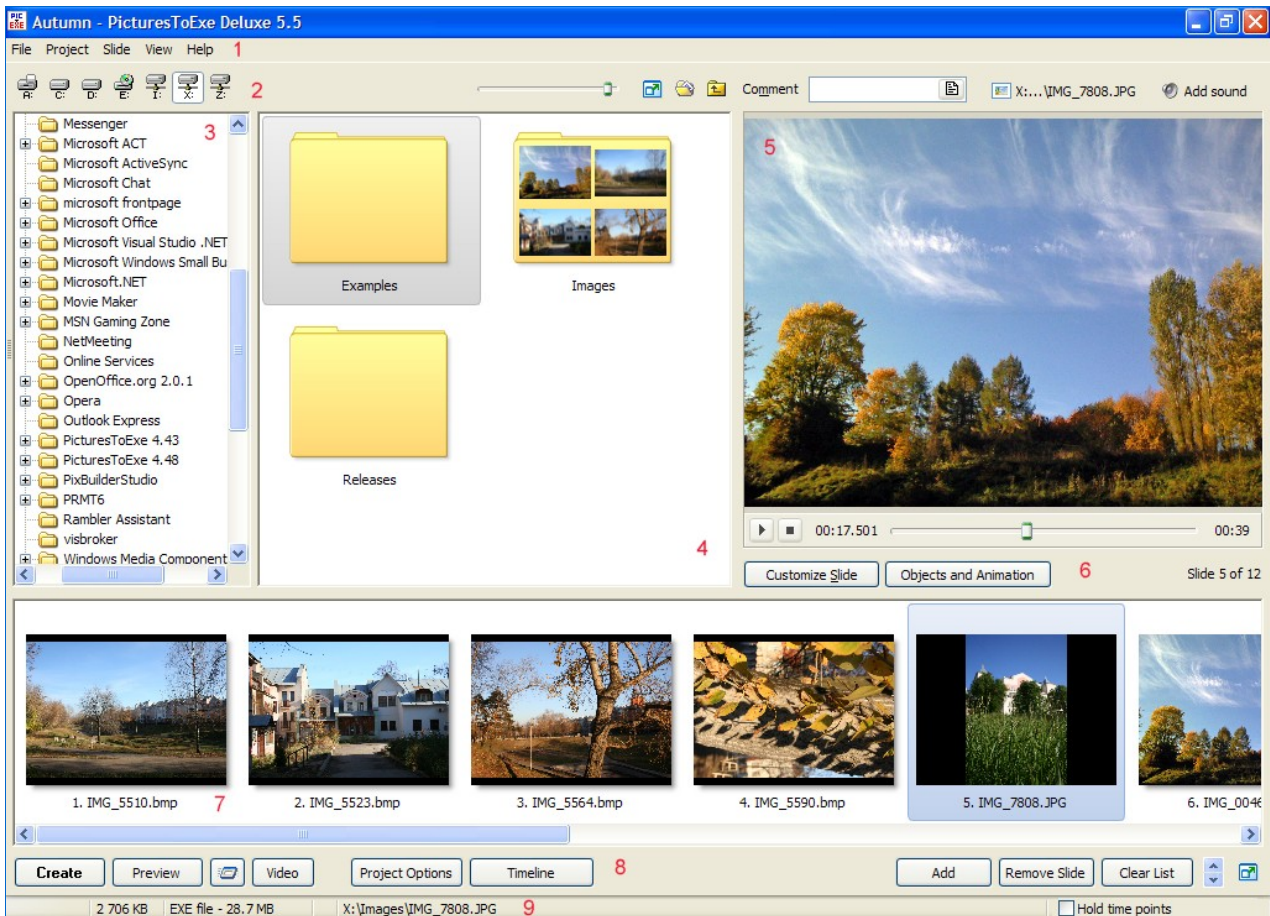
If you want to burn DVD-video disc with your created slide shows, do the following steps:

1. Click **Video** in the **Control Buttons** panel of the **PicturesToExe** and select **Burn DVD-video disc**;
2. **Add** the necessary projects to the **project list** and click **Next**;
3. Customize the **menu** of your disc by choosing the **background** and adding **music** to it and press **Next**,
4. After that, select the **place** on your computer for saving **temporary files** and **ISO image** of your disc and click **Start** for burning the disc.

That is the easiest way to burn DVD-disc with your projects.

Main Window Menu

As you can see, the main window menu consists of a number of smaller windows and icons. They are:



1. the main menu;
2. the drive selector;
3. the directory tree of files;
4. the selected file in the directory tree;
5. the preview window for a selected slide;
6. the control buttons for a selected slide;
7. the slide list;
8. the control buttons;
9. the status bar.

Main menu

At the top of the main window you can see drop menu:

- file menu;
- project menu;
- slide menu;
- view menu;
- help menu.

File menu

File menu has the following options:

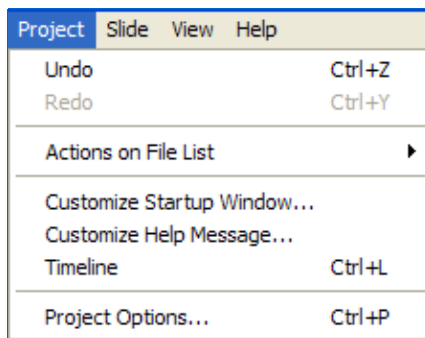
File	Project	Slide	View	Help
New...				Ctrl+N
Open...				Ctrl+O
Save				Ctrl+S
Save As...				
Create Backup in ZIP				Alt+B
Templates				▶
Open Recent Project				▶
<hr/>				
Create Slideshow				F9
Create Slideshow As...				F8
Create Slideshow and Run...				Ctrl+F9
Create Screen Saver...				F7
Preview				F5
<hr/>				
Burn DVD-Video disc...				Shift+F1
Create AVI file...				Shift+F2
<hr/>				
Exit				F10

- The **New** – this option is used to open a new project.
- The **Open** – is used to open earlier saved projects.
- The **Save** and the **Save As** will help you to save created projects under its own or new names.
- The **Create Backup in ZIP** – this option will help you to make all your projects in ZIP format. It's helpful for making reserve copies of your slideshows if you want to save them and then take them to another computer.
- The **Templates** – this option provides you to save existing projects and to use them as the templates while creating next slideshows. Opening this feature will bring you to another dialogue box the **Manage Templates** and the **Create Template from this Show**. The **Manage Templates** means to save projects in one directory file and then to use them in creating a new slideshow with the settings saved in templates (The **Create templates from this Show**).

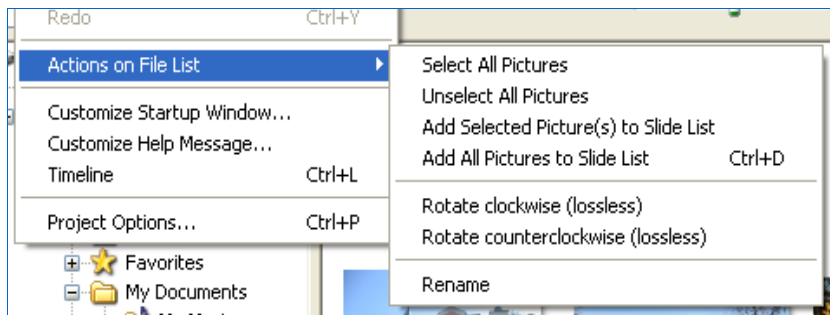
- The **Create Slideshow** and the **Create Slideshow As** are two options, which help you to create exe files and save them under different names. The **Create Slideshow and Run** means to create exe file and run it immediately after its creating has been finished.
- The **Create Screensaver** helps you to create your slideshow in **scr file**. You may use your slideshows in this format as animated screensavers.
- The **Preview** option is used to preview your slideshows from the beginning up to the end before creating it.
- The **Burn DVD-Video Disc** option is needed to put created slideshows on **DVD** or **Video discs** and then run them in DVD players or other computers.
- The **Create AVI-File** option means to make **AVI-File** and then customize it in other editing programs.
- The **Exit** option allows you to exit PicturesToExe.

Project Menu

Project Menu consists of such options as:



- The **Undo** and **Redo** options will help you to make some changes while creating your slideshow.

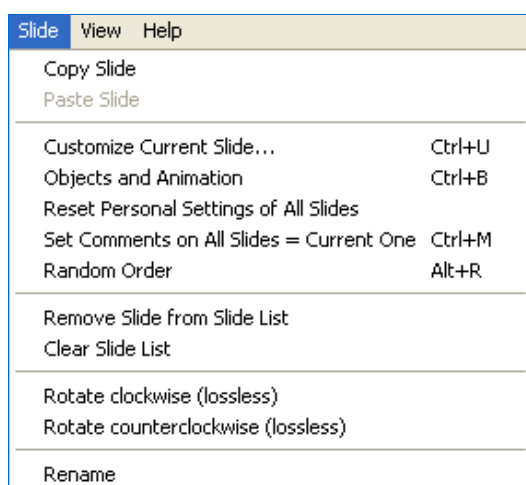


Actions on File List - this option goes to the selected file in the directory tree. With the help of this option you can select or unselect all pictures at once and add them to the slide list. It will save your time as the work will go more quickly.

- The **Customize Startup Window**, the **Timeline option** and the **Project Options** will be described thoroughly further (see **Projects Options, Main Tab p. 37**).

Slide Menu

Slide Menu has a number of options, which are related to the slide itself and its characteristics.

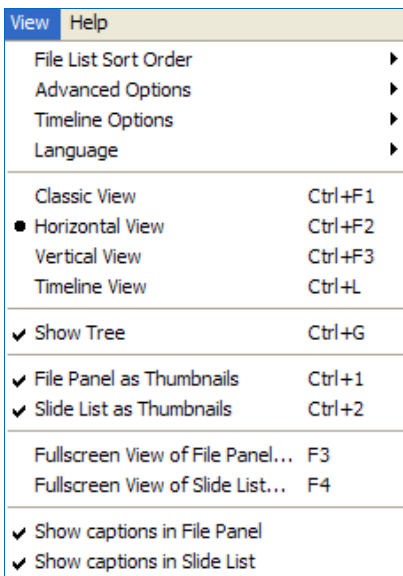


- If you want to **Copy, Rename, Remove Slide from Slide List** or **Clear Slide List** you should use the necessary buttons.
- Other options such as **Customize Slide, Objects and Animation** are related to the characteristics of the slide. They are needed to adjust the slide and will be described further (see **Customize Slide p. 23** and **Object and Animation p. 27**).
- You may **Rotate** your slides **clockwise** and **counterclockwise** with the help of consequent buttons. It is important to note, that it is a virtual rotation in PicturesToExe and the initial files with

images won't be modified.

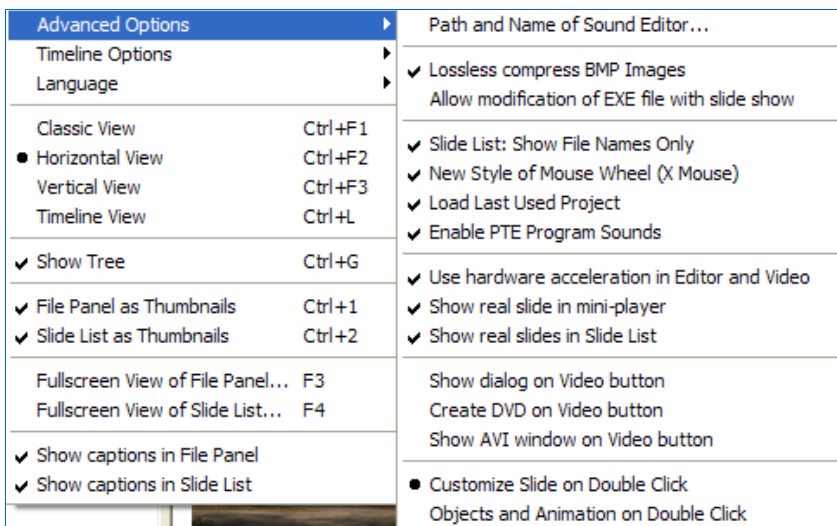
View Menu

View Menu provides options, which will help you to adjust your main window:



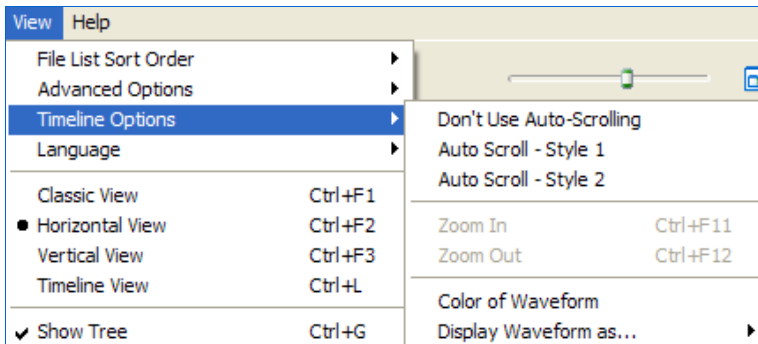
- The **File List Sort Order** is used to choose the necessary order of your files according to the **name, extension, date** or **size** and so on.
- If you click on **Advanced Options**, the following dialogue box will be opened:

Here you can see different options:



- **Path and Name of Sound Editor** helps you to insert the location and the name of any sound editor you wish.
- **Lossless Compress BMP Images** helps to compress images of BMP format.
- **Slide List: Show File Names Only** gives the view of the slide list only with names without any thumbnails and additional information not to interfere.
- **New Style of Mouse Wheel (X Wheel)** gives you an opportunity to scroll any window you choose without clicking on it. This option is very helpful and saves your time.
- Selecting the feature the **Load Last Used Project** is necessary, if you want the last project open automatically, when you open PicturesToExe. It's very convenient, if you work at one project for a long time.
- The option **Enable PTE Program Sounds**, if switched on, will work when certain functions of the program are used.
- **Use Hardware Acceleration in Editor and Video** should be selected for the better quality of using animation effects, but if you have not very good graphics card, you'd better switch this option off.

- **Show real slide in mini-player** and **Show real slide in Slide List** are two options, which help you to see the real size of the slide (the size like in the slide show) consequently in the preview window and in the slide list.
- **Show Dialog on Video Button**, **Create DVD on Video Button**, **Show AVI Window on Video Button** are three options, which are used to create DVD and AVI files. If you choose the first option, the dialog box with two DVD and AVI buttons will appear. If you choose the second or the third option, DVD or AVI button will be shown. It depends on your choice.
- The next two options **Customize Slide on Double Click** and **Objects and Animation on Double Click** may be chosen depending on your preference and frequency of usage of these two features.
- The **Language** option includes more than twenty languages.
- You may also choose among three views of the main window: **Classic**, **Horizontal** and **Vertical Views** and the views of **File Panel** and **Slide List**.
- There is also one option, which will be described in details further. It is **Timeline option**. Here you can see such functions as:



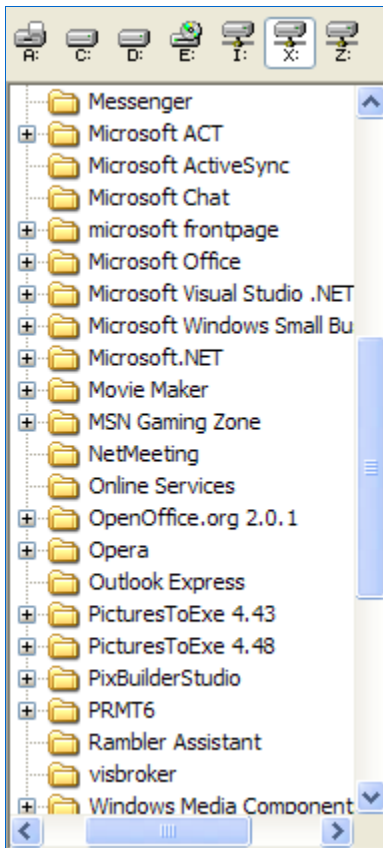
Here you can choose between **styles** of the **Auto Scroll**, to select the color of the **Waveform** and some other functions.

Help Menu

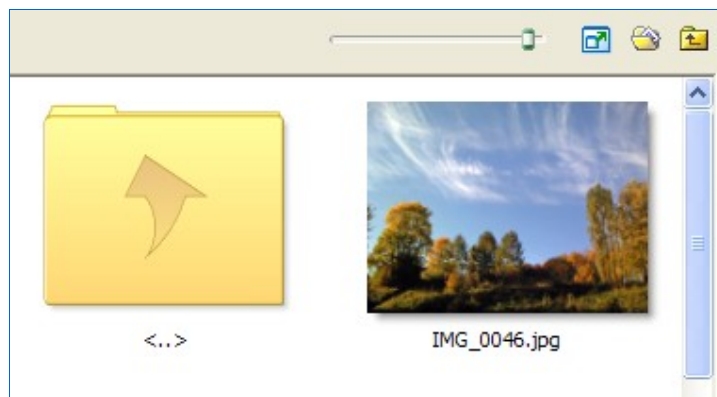
This option gives you an opportunity to find answers on all your questions and to see how different options may function.

The Directory Tree of Files

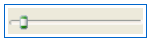
The drive selector and the file directory tree is represented on the left side of the main window.



It's an ordinary window, where all directories and files of your computer are arranged on different drives. It's very convenient to choose among them and to look for the necessary directory or file. When you choose the interesting directory and double click on it, this file will appear in the window for a selected file in the directory tree.



Above the window, which is on the right, you can see several icons. What do they mean?



this is the feature for regulation the size of the images in the selected file;



this icon changes the file directory tree to a full screen window, where you can see all files and images more clearly;



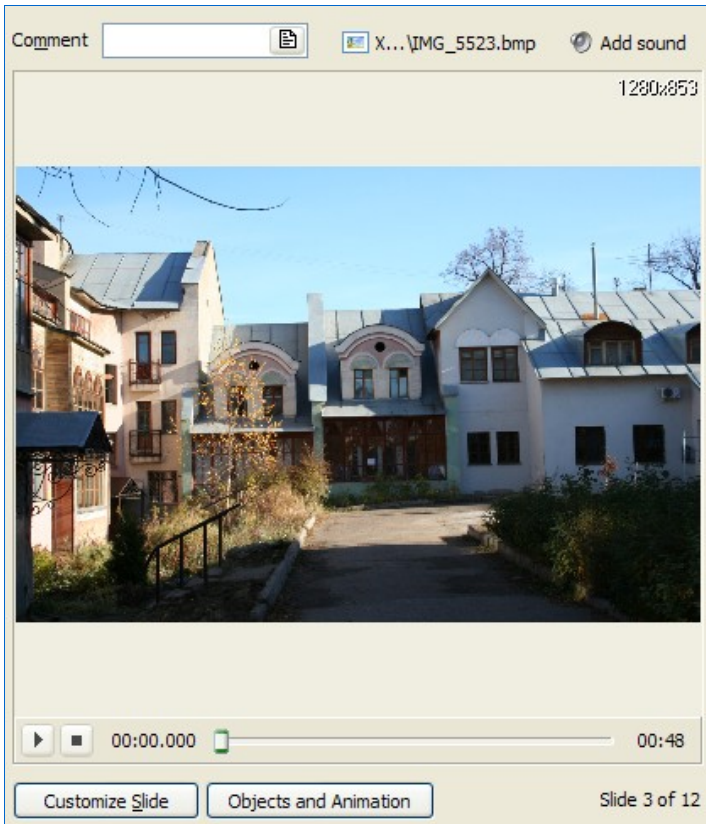
this icon gives you a short way to go to the file **My Documents**;



this icon gives you an opportunity to go up to one level while searching for the necessary image.

Preview Window for a Selected Slide

When you click on the necessary image in the file directory tree, it will appear in the **Preview Window for a Selected Slide**. Here you can see the chosen image and some of its control buttons.



- **Main image** shows the current position of chosen by you file.
- In the **Comment** box you can write any suitable comment to the image. If it's not very convenient to you to write in the comment line, you can click on the icon next to the line, the dialog box will appear and you can write any comment. You will see this comment on the very slide you have chosen.
- In the **Add sound** box you can add the necessary sound file to a certain slide. If you want to add music or some sound commentary, you should double click on the icon beside the sound line and the dialog box, where you can choose the sound file, will open.
- Below the main image you can see **timeline** bar, where you can preview the slide show. On the left from the timeline bar there is the **display**, which shows the position of the current slide. On the right you can see the total time of the slide show.

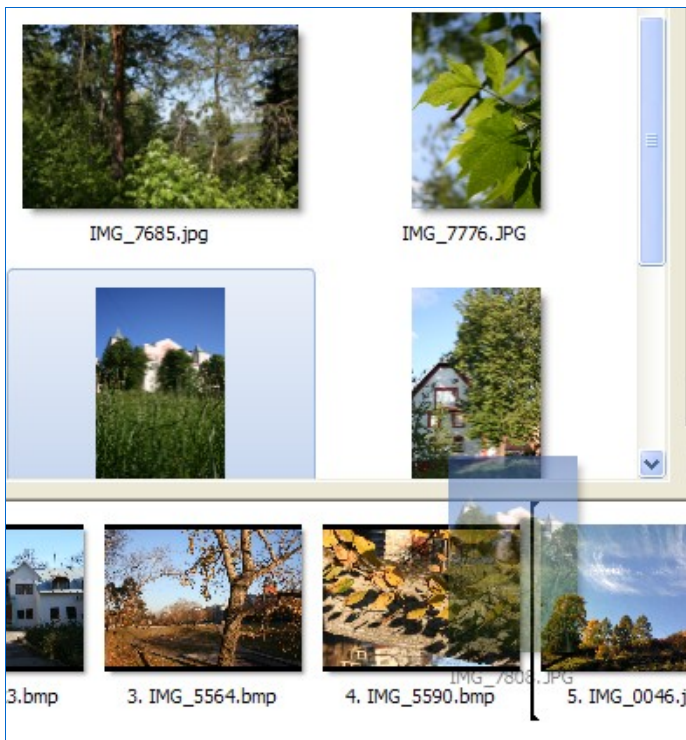
- Here you can also see two buttons **Play/Pause** and **Stop**. **Play** button is used to begin the preview of your slideshow in a small preview window. This button plays two roles: **Play** and **Pause**. If you click on **Play** it will turn **Pause** and vice versa. When you click on **Play**, the blue triangle will stand at the beginning of the timeline and will move to the right on the bar.

Here you can also see two buttons: **Customize Slide** and **Objects and Animation**. They are used for adjusting each slide, which you choose and which appear in the preview window. These two functions will be described in details further (see **Customize Slide** p. 23 and **Object and Animation** p. 27).

The Slide List

The **Slide List** is the place in the main window, where all slides, which are selected for the slide show, are situated. It's important to note, that all slides are set up in a certain succession, and you can move slides by dragging them in the necessary direction. You can add images in the slide list in several ways:

- by double clicking on the image in the selected file in the directory tree;
- by clicking on the image and then clicking on the button **Add**, which is situated in the **Control Buttons** panel;
- by dragging the image with the help of the mouse, in this case it will look in a such way.



As seen from the figure, keep clicking on the image and drag it to the necessary place. The black line behind the image shows the place where this image will be set.

If you want to make some actions on the chosen slide in the slide list, you should right click on this slide and the following box will appear:

Copy Slide	Ctrl+C
Paste Slide	Ctrl+V
Remove Slide from Slide List	
Clear Slide List	
Move to Top	Ctrl+Home
Move to End	Ctrl+End
Random Order	Alt+R
Open picture	Ctrl+W
Customize Slide	Ctrl+U
Objects and Animation	Ctrl+B
Rotate clockwise (lossless)	Ctrl+F
Rotate counterclockwise (lossless)	Alt+F
Edit sound comment	
Rename	F2
Start Preview from the current slide	Ctrl+R

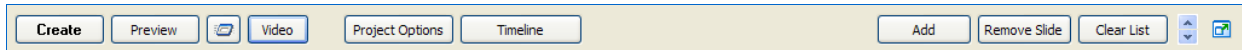
- You can **Copy**, **Paste**, **Remove** the slide or **Clear the Slide List**.
- With the help of the next three buttons you can change the order of images in the slide list. You can **Move** the selected image to **Top** or **End**, you may choose **Random Order** of images.
- Option **Rename** allows you to rename the image and give it another name or title.
- **Start Preview from the Current Slide** means that you can see the slide show not from the beginning, but from the chosen by you slide. It's convenient, if you want to see some effects or transition from one slide to another and you don't have to wait till that very slide.


It's necessary to note, that this menu has the same options as some of the drop menu and control buttons.

It's just more convenient and quick to use this box while working at the slide show, because all necessary options and functions are gathered together.

The Control Buttons

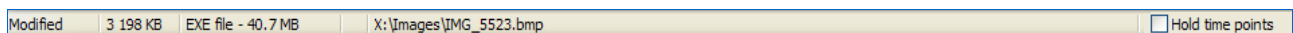
With the help of the window **The Control Buttons** you can perform different actions and create the slide show. Here you can see the following buttons:



- **Create** button is used when you have finished to customize your slide show and want to create it as an exe file. This format is very convenient, if you want to replace this slide show to another computer or just keep it as an exe file in your own computer. You should remember, that if you make some changes in the slideshow and then you press **Create** button, the last exe file will be rewritten. So if you want to save both exe files, the first and the second variant, you should use option **Create Slideshow As...**
- **Preview** button allows you to preview the whole slide show from the beginning up to the end. If you want to preview it from some chosen by you slide, you should use the button, which is found by **Preview**.

- When clicking on **Project Options**, a large dialog box with numerous options and settings for your slide show will appear. A detailed description of this button you can find further (see **Projects Options** p.37).
- **Video** button will help you to create a **DVD-video disc** or an **AVI-file**. It depends on what you need. This feature will be described later (see **Video Options** p. 55).
- **Timeline** option is necessary for synchronizing images to music. On clicking this button you will see timeline window, where you should do all adjustments. This function will also be described in more details further (see **Timeline Operation** p. 51).
- **Add, Remove** and **Clear List** buttons are related to the slide list and are used to add new images, remove unnecessary ones and to clear the whole slide list.
- The explanation of **icon** was given earlier in the article about the **directory tree of files**.

The Status Bar

At the very bottom of the main window you can see the status bar:



- The first word «**Modified**» means, that there were some changes made in your project. If you save these changes, this word will disappear.
- The next box shows the file size of the main image of the current slide.
- In the third box you can see an approximate size of your exe file after creating it.
- Further you can see the directory where the selected image is situated.
- There is one more point in the status bar, which is also very important – **Hold Time Points**. The default is, that this option is unchecked here. The meaning of it is, that if you add new images to the slide list, the other images are moved to give space for the new image on a certain number of seconds, which you have set for showing each slide. But if the option **Hold Time Points** is checked, the images will not be moved and the slide will be added without adding the space for it.

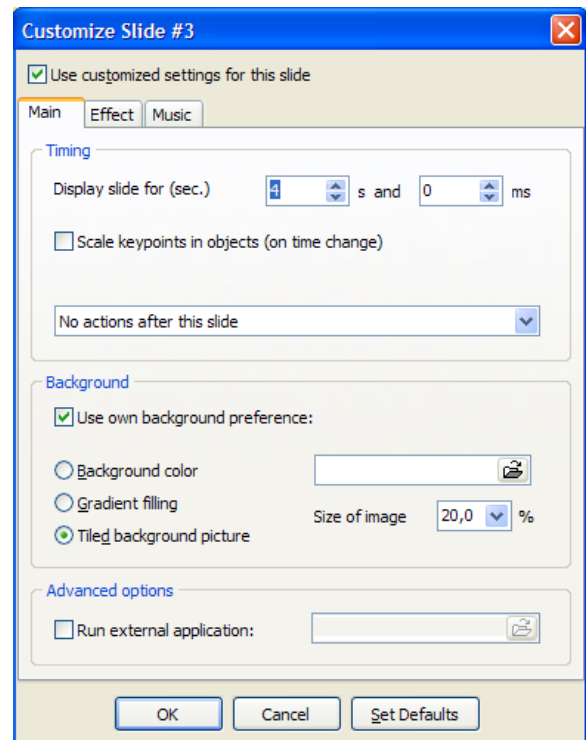
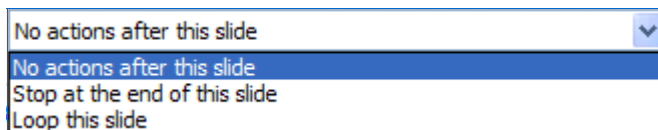
Customize Slide

If you click on the button **Customize Slide** in the preview window the following dialog box, where you can see three tabs: **Main**, **Effect** and **Music Tab**, will appear.

Timing

Options **Timing**, **Background** and **Advanced Options** are found in the **Main Tab**. **Timing** includes the following features:

- **Display slide for (sec.)** - here you can put the number of seconds and milliseconds and this image will be on for a desired period of time. You can also use up and down arrows for setting the time.
- **Scale keypoints in objects (on time change)** is the option, which spreads the slides upon the new timeline. If you change the time of showing for the slide, and this option is unchecked, the time will be changed only for new slides. But if the option is checked, the new timeline will appear for all slides.
- The next menu gives you an opportunity to choose among the options, which are self-explanatory. You should just select what you need.

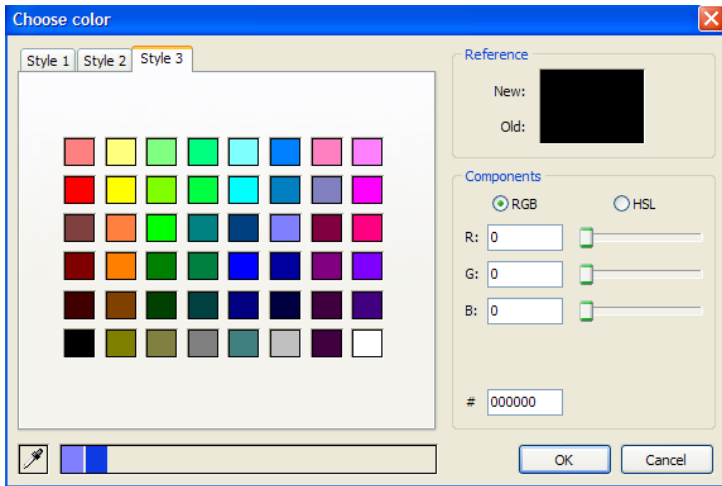


- For a example, if you set **Stop at the end of this slide** for the third slide, the slide show will be stopped, till you click **Right** on the keyboard.
- If you select **Loop this slide**, in this case, the slide will get caught in an endless loop. If there is animation in this slide, it will also be looped, till you press **Right**. This option is very useful for creating the menu, from which the slide show will go further.

Background

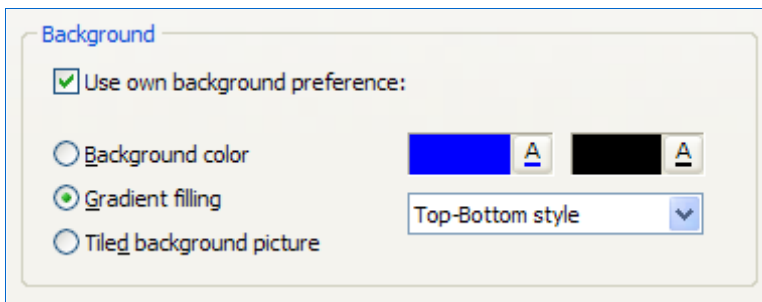
It's important to note, that this option is necessary, if the size of the image doesn't fit the whole size of the monitor screen and you should fill the left place with some colour or background to be exact. Here you can choose among **Background Colour**, **Gradient Filling** and **Tiled Background Picture**.

- If you choose **Background Colour**, just simple colour will appear. To choose the colour, you should click on the button «A» beside and you will see the following dialogue box.



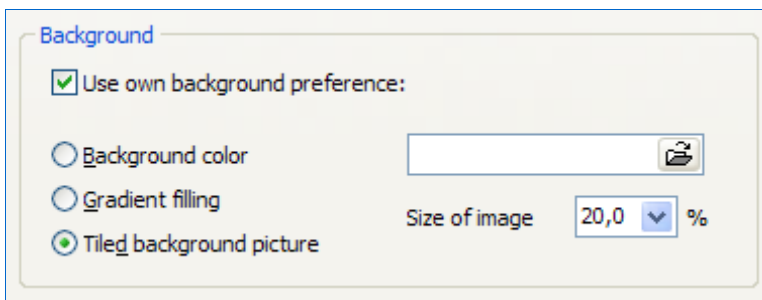
Using this colour box, you can choose any colour you wish. You can also choose between **RGB** and **HSL**, which is the modification of **RGB**. You can adjust all necessary parameters.

- If you choose **Gradient Filling**, you will see the next box.



Here you can choose between **Top-Bottom Style** and **Left-Right Style**. It means that you can add colour background at the top or at the bottom of the screen or on the left or right side of it. To select the colour, you should also click on the buttons «A».

- If you choose **Tiled Background Picture** the following box will be shown.



As you can see, by clicking on the **folder**, you can select the image from any directory file you wish and adjust its size.

Advanced Options

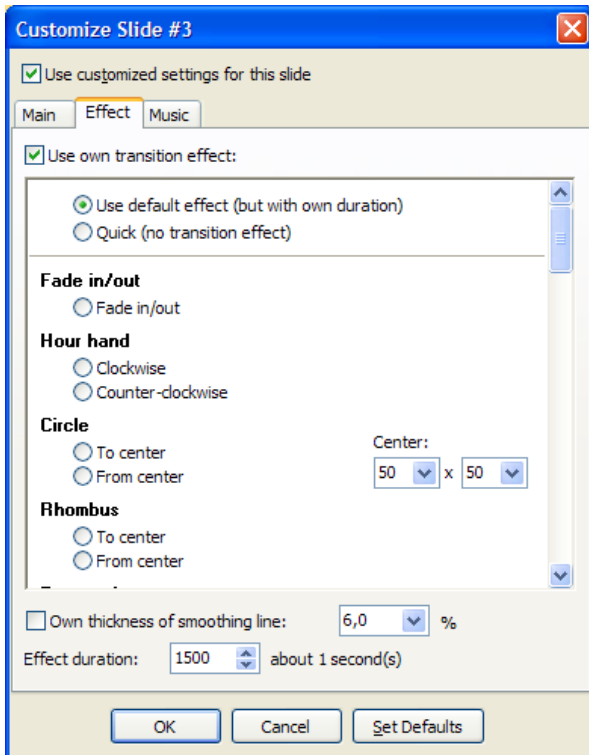
Advanced Options include the button **Run External Application**. On choosing this option you can add to your slide show any application from any directory file. It may be any picture, menu, slide show and so on.

Effect Tab

If you want to add some settings for the slide or to use transition effects, you should have a look at this tab. Here you can choose among a great number of different transitions by clicking on them.

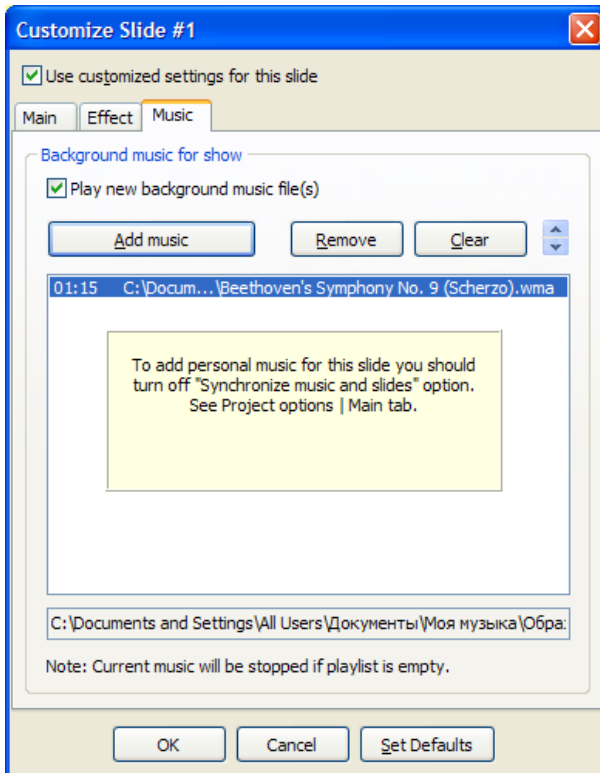
You can select **Fade in/out**, **Hour hand**, **Circle**, **Rhombus**, **Rectangle**, **Gates**, **Page Effect**, **Advanced hour hand**, **Mosaic**, **Push Effect**, **Slide Effect**, **Curling of Page**. To see how these transitions work, just click on them and have a look.

You can also adjust the **thickness of smoothing line** and **Effect duration**, that is the time of continuance of this effect, by using up and down arrows for setting the time.



Music Tab

If you want to add music to the slide, you should use **Music Tab**.



Note, that this sound file you choose, will be added only to an individual slide. If you want to add music to the whole slide show, you should use **Project Options**, **Music Tab**, where you adjust not a single slide, but all the slides in the slide show.

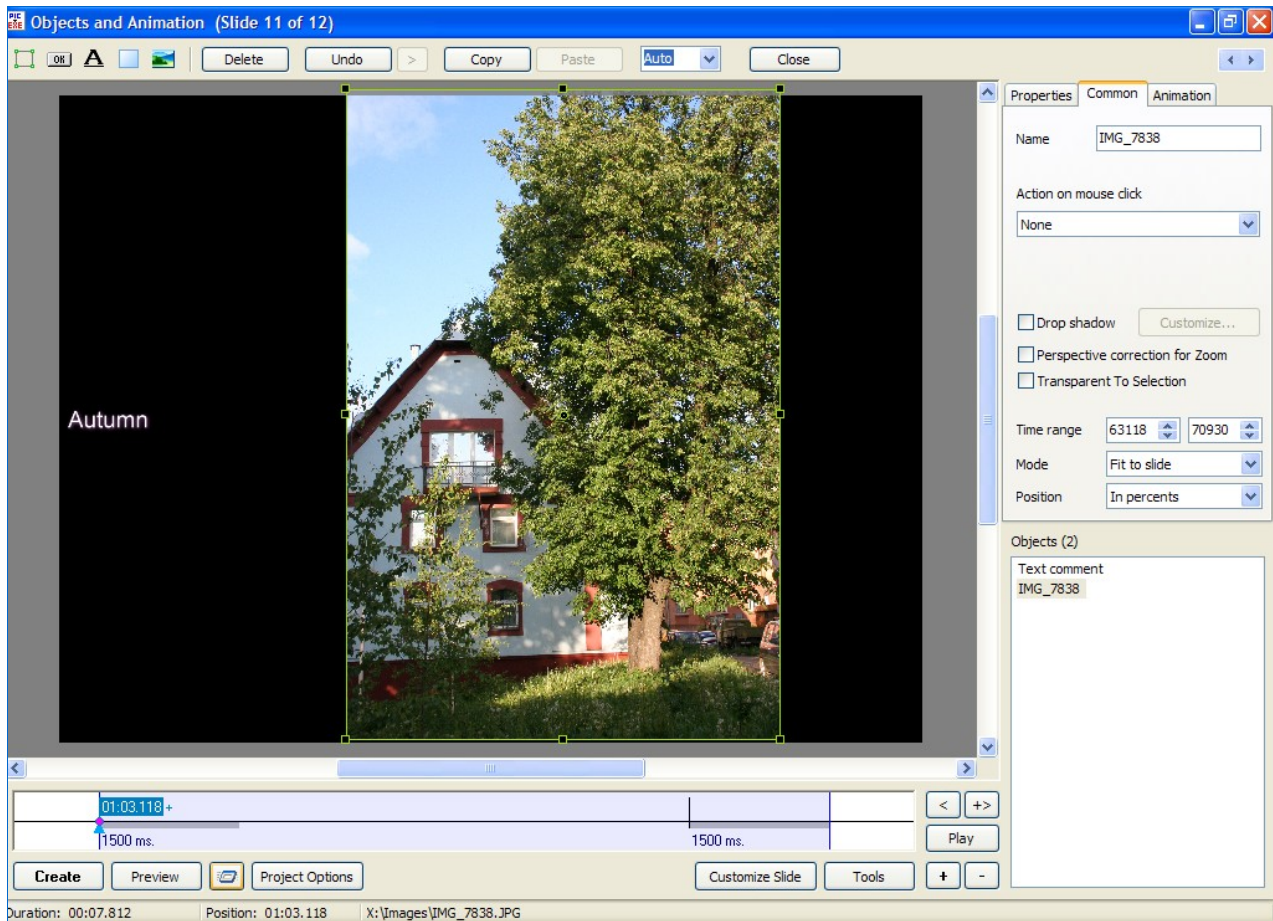
You should remember, that if you add music file in this way, the music will be stopped after the slide is shown.

Here you can also **Add** several music files, choose among them, **Remove** them and **Clear** the playlist.

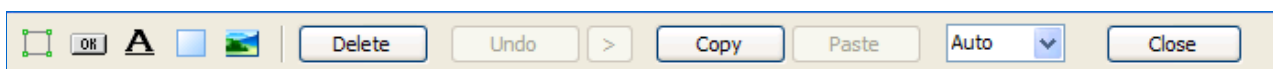
Objects and Animation

Main Window

In addition to the customized settings of the slide, you can adjust some other options, such as **Objects and Animation**.



When clicking on the button **Objects and Animation** in the preview window, the main window, which is shown above, will appear. Here you can see **the information bar in blue colour**, where you see the name of the file, which you have selected. Under the information bar there is **the tool bar**, which includes a number of icons.





With the help of the first icon **Frame** you can add frames to the slide. If you add the frame, an image or a group of images will be dependent on it. It means, that a frame will be a parent and all images inside it will be its children. You can adjust a lot of options: **colour, opacity, drop shadow, pan/zoom, size** of the frame and so on.



The next icon **Add Button** helps you to add buttons to your slide. With the help of it you can make different actions to the slide and to the slide show on the whole. For example, you can exit the slide show, go to the next or previous slide, make a pause, send e-mail. The whole list of all possible functions you can find in the common tab on the right side of the main window. As well as with the **Frame**, you can customize the view of the button according to the **colour, size, shadow**. You can also add the necessary text of any font, colour and size.



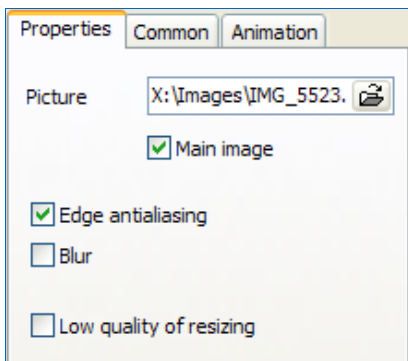
The icon in the form of «**A**» helps you to add the text to the image. You can choose **font, size**, also **shadow, pan/zoom** and other options here to make your comment fit the style of the image and the slide show.

-  The fourth icon **Rectangle** as well as frame may be used for making slide shows more animated. It may be also used as backgrounds to the images.
-  On clicking the fifth icon **Add Image** the dialog box, where you can choose the necessary image from the directory tree of files, will appear. If you want your added image to be independent from the other objects, you should see, that no objects are highlighted in the object list in the right lower corner of the main window, before clicking on this icon.
- The next button **Delete** is used, when you want to delete the selected object from the object list. You should remember, that if you delete a parent object, all its children objects will also be deleted.
- The icon **Undo** and the **>** icon, that means **Redo**, give you an opportunity to make changes during your work till they are not saved.
- The ninth and tenth icons **Copy** and **Paste** are used to save images and other effects and to use them later with other slides. It's very convenient, if you want to use similar effects and transitions with several objects. You just should highlight the necessary effects in the object list and click the button **Copy**, then open the next slide and press **Paste**. All effects will be applied to that image.
- The next icon shows the scale of the slide. You may choose the necessary number of percents from 10% to 500% for better view of the image. It's convenient, when you want to have a look at the image, but the size of it is very large or small. If it's **large**, you may reduce the **Percentage View** up to **10%** if you can't see the whole image at 100%. On the other way, if the image is too **small**, you can put **100%** and more for better look at it.
- The last icon **Close** allows you to close the main window of this option **Objects and Animation**.

Properties Tab

The **Properties Tab** is situated on the right side of the main window of the option **Objects and Animation** and shows the main characteristics of the image or object. Here you can see the information where this image or object is located on your computer.

You can also choose if the slide is the **main image** in the object list, if the **edge antialiasing** and if there is **blurring**.



- The **Edge antialiasing** should be normally turned on. It is used to minimize the distortion of some artifacts of high resolution images, when they are shown at low resolution.
- **Blur** feature is very convenient if you want to minimize the pulsing of the image, which you zoom.
- **Low quality of resizing** is the feature, which shouldn't be always used. It's helpful only when the quality of the image is not very good and you have white lines in your image.

For better understanding of the functioning of this option it is better to see the difference. Both images are zoomed out.



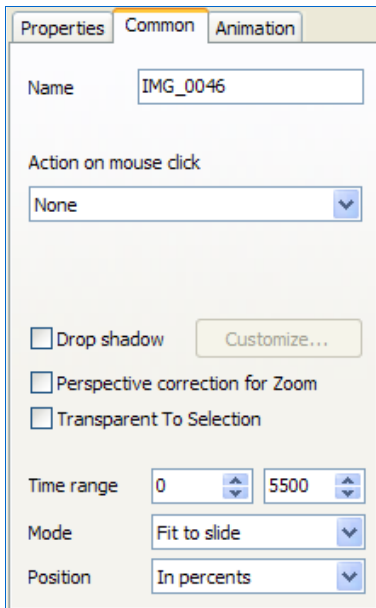
The first variant is made **without** the option **Low quality of resizing**, the effect is degraded.



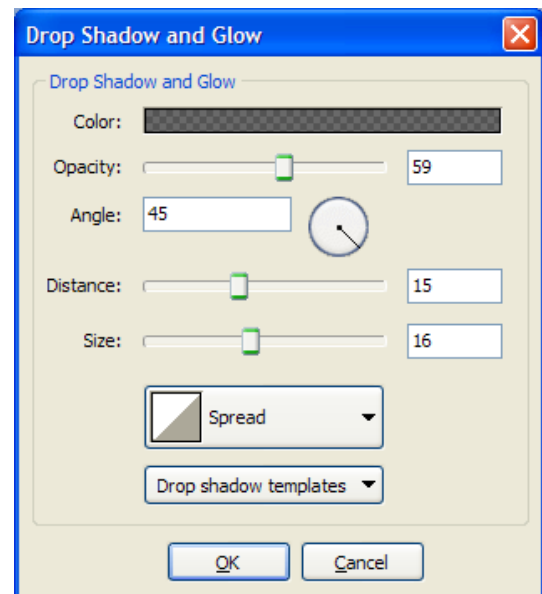
The second variant is made **with** the help of **Low quality of resizing** and the picture seemed to be more legible and sharp.

Common Tab

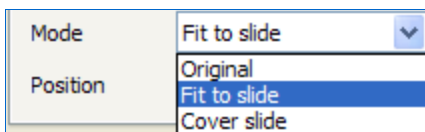
The Common Tab is found next to the Properties Tab and includes the following options:



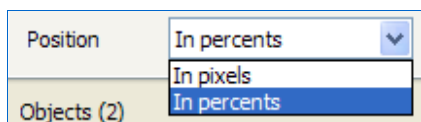
- First you can see the **Name** of the image you have selected and adjust.
- Then you can choose the **Action on mouse click**: **None**, **Exit**, **Next Slide**, **Previous Slide**, **Help** and so on.
- You can customize **Drop shadow** (the figure is shown below). Here you can select the **Colour** of the shadow by clicking in the colour box. You may set **Opacity** from **0%** to **100%**, **Angle** and **Size** of the shadow, **Distance** from the image and **Spread** (Form) of the shadow. At last you can save shadow as the **Templates**.



- **Perspective Correction of Zoom** is used instead of camera zoom.
- **Transparent to Selection** gives you an opportunity to make changes of the selected object without touching the other objects, if there are any.
- **Time Range** – here you can set the time of showing the image in the slide show. But you'd better use timeline window.
- You can also select the Mode among **Original**, **Fit to slide**, **Cover Slide**. **Original** is the real full size of the slide and it's not very convenient to use. It's better to use **Fit to slide** mode or **Cover slide** mode while customizing the image.

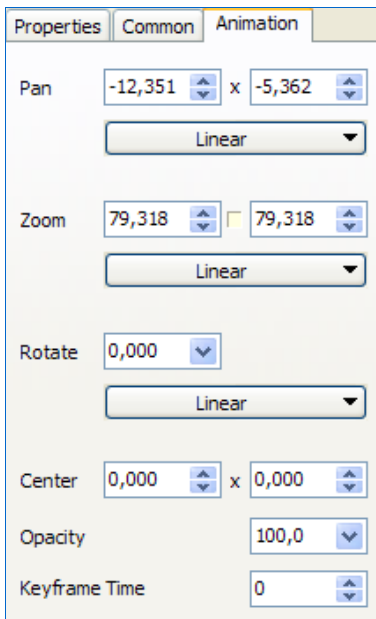


- You may also fit the position in pixels or in percents.



Animation Tab

Animation Tab contains such options as **Pan**, **Zoom**, **Rotate**, **Opacity** and some others, which will be described further:

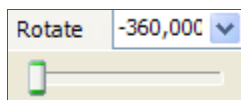


- **Pan** effect has horizontal and vertical positions, with the help of which you can move the image left/right and up/down. As you can see from the figure, you may customize it with the help of **up/down arrows**. The left block links with the left and right movements of the image and the right block links with the up and down movements. You may also move the slide by dragging it with the help of the mouse. In this case, the display in these two blocks will be changed automatically.

- **Zoom** effect helps you to enlarge or diminish the image, it depends on your choice. You may do it with the help of up/down arrows or by dragging the green rectangle of the image with the mouse. There is one special feature in this option. You can see a small **square** between the boxes with arrows, by default it is turned off, and the slide changes its size proportionally, that is the figures in both these boxes are the same and the slide just changes its size without changing its form. But if you turn this small square on by clicking on it with the mouse, it gives you an opportunity to change not only the size of the picture, but also the form of it. It means that you can **compress** or **extend** the image. With the help of the

arrows in the left box you may change the image **horizontally** and in the right box **vertically**. If you change the image and then you want to make it proportional, you can just turn this small square off and the slide will become proportional again.

- **Rotate** effect gives you an opportunity to rotate the image clockwise and counterclockwise. The default setting is zero here. If you click on the arrow in the rotate box, the following dialog box will be opened.



Here by moving the cursor in this box, you may rotate the image in both directions. It's important to note, that you may also move the slide dragging it by the angle of the green rectangle, which you may see if the object is highlighted.

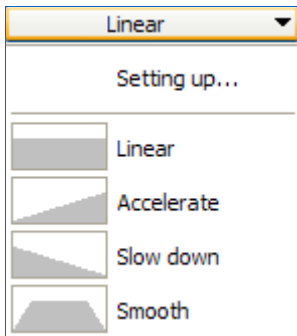
- **Center** effect is a very powerful feature, which gives you a lot of opportunities in animating and customizing the images. It's important to mention, that the center of any image or object, which you want to adjust is situated in the real center of it. If the image is highlighted, you may see this center, which is shown by the green circle in the green rectangle. If you want to change it for some reason, you may do it with the help of this option. You should press **Shift** and drag the center with the help of the mouse simultaneously in the direction you wish. That will be your center of the image from that moment. You may now move the image and the center will be on its new place. In the boxes with **up/down arrows** you may change the figures and the image will move relatively its center **horizontally** and **vertically**. If you use the arrows in the left box, up arrow helps you to drag the image to the left, down arrow to the right. If you use arrows in the right box, up arrow moves the image up, down arrow moves it down. This option is also very helpful not only in moving but also in rotating the slide. To have a look at all possibilities of this option, it is better to experiment with it.

- **Opacity** effect also helps you to make a lot of different things and views. Opacity varies from **0%** to **100%** that means you can make the image invisible at all or vice versa visible. The **default** setting is always **100%**, but you may change it by dragging the cursor in the opacity box. You may add several objects or images and set different opacity for all of them. The effect is very beautiful. For better understanding of this option it is better to try to work with it.

- **Keyframe Time** option shows the time of the current slide from one keypoint to another one and will be described further (see **Timeline Operation** p. 51).

Linearity

In several options such as **Pan**, **Zoom** and **Rotate** you may find **Linear** movements of the image, which you may adjust. When clicking on it, the following dialog box will appear.

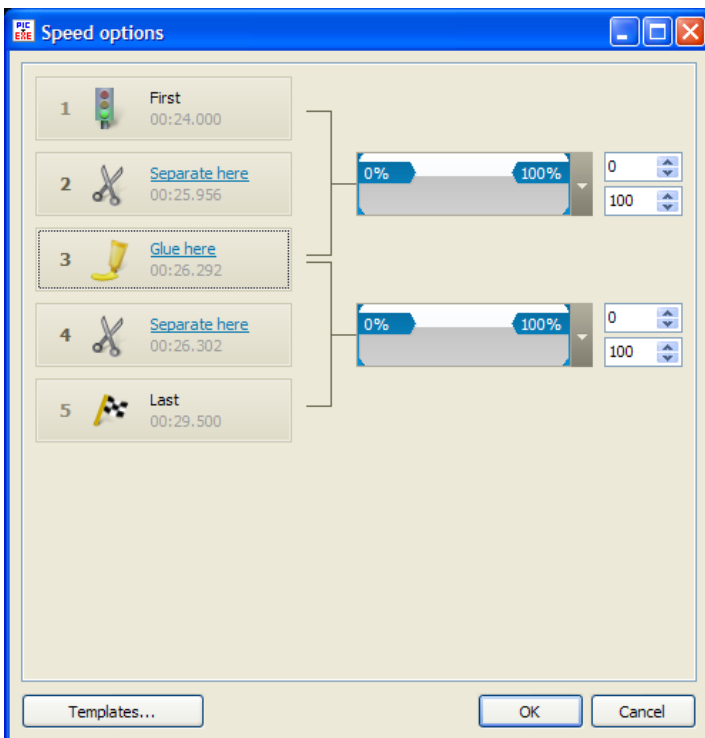


Here you can see **Settings up**, **Linear** and non-linear features: **Accelerate**, **Slow Down** and **Smooth**.

- **Linear** means that an object or an image moves (begins, continues and ends) with one and the same speed.
- **Accelerate** begins slowly and then accelerates up to the end.
- **Slow Down** begins at a high speed and then decelerates up to the end.
- **Smooth** begins slowly and ends also slowly, but in the middle it moves with linear speed.

More often **Linear** and **Smooth** movements are used.

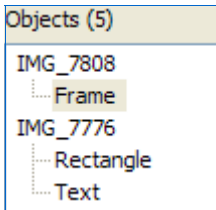
First you should choose linear or non-linear movement, then click **Setting up** and the next box will be opened.



Here you can see the number of keypoints, which you have created for a certain image in the timeline window. You always have the first and the last keypoint and a number of inner keypoints. The first and the last cannot be changed, but inner keypoints are changeable. You can see the scissors on the inner keypoints, which may help you to separate the movement or vice versa to glue it. The difference is, that if you separate, the movement will not be smooth. So it is better not to do it and to leave it as it is. So if you make some changes here, you should make them also in **Pan**, **Zoom** and **Rotate** options. It's important to note, that you may save these speed options as **Templates** and use with other images.

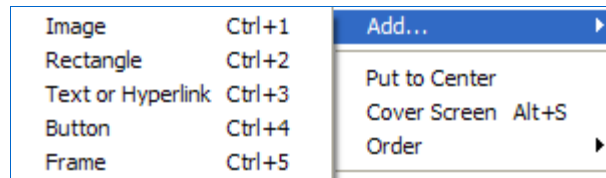
Object List

Object List is situated in the right lower corner of the main window of **Object and Animation**. Here you can see the list of images and objects, which you have added and work with.



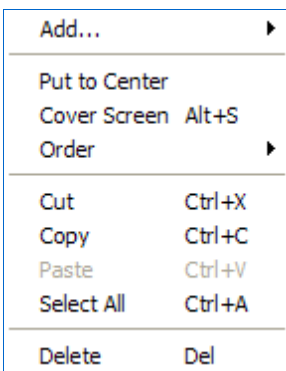
You can add objects to the object list in several ways:

- by selecting the buttons in the tool bar above the preview window: **Add Frame, Add Button, Add Text** and so on;
- by right clicking on the preview window or the object list, where pop-up menu will appear and you may choose the necessary object: **Image, Rectangle, Text or Hyperlink, Button or Frame**.

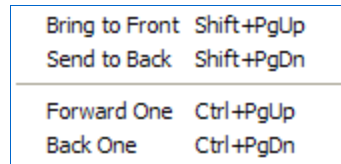


It's important to note, that there are **parents/children relations** between **objects**. As you can see from the figure above, there are two main or parent objects and several children objects for each main image. It means, that children objects are subordinated to the parent ones and they have all features of their parents. If you delete a parent object, all children objects will be also deleted.

With the help of the object list, you cannot only add or delete different objects, but also adjust them. When right clicking on the object list, you may perform different operations.



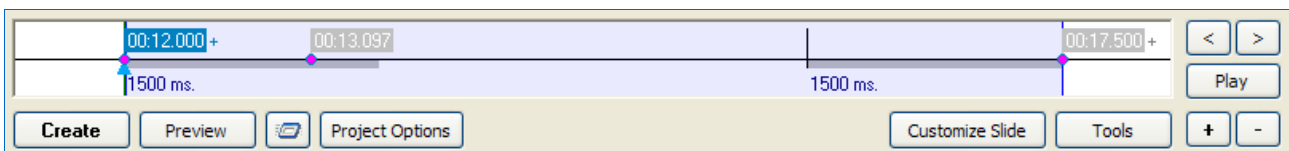
As have been said already, you may **Add, Delete, Cut, Copy and Paste** objects. You may also change the order of the objects.



Besides, you may also use keyboards shortcuts for quicker work at your objects. For better understanding of this options, it is better to experiment with them.

Timeline Animation

Timeline option is situated below the preview window and contains a number of features.



Here you can see the blue rectangle, which identifies the time of showing a current slide. The blue line on the left shows the beginning of the slide and on the right - the end of the slide. You can also see keypoints, which are highlighted in pink. Above the first keypoint there are the figures in blue, which show the time from the first image up to the current slide. You can add any number of keypoints to your slide by clicking the button «+» or delete them with the help of the «-» and make different positions of the slide on the screen. That is one of the uses of timeline option, you can make various animations with one or more slides. You may also drag these keypoints by left clicking of the mouse and putting them to the necessary position on the timeline bar. In this case,

the figures above the keypoints will change according to their position.

On the right from the blue rectangle you may also see two buttons with **left** and **right** arrows. They are used to highlight the keypoints and move the blue triangle cursor on the grey bar. You can also use the mouse for this purpose, but if you have a great number of keypoints, which are near one another, it is not very convenient to control them manually and it is better to use these two buttons.

Below these buttons you can see one more option **Play**. With the help of it you can preview the animation of the current image, but without music background. It is just a quick way to check the animation and to change it then, if it is necessary. It's important to note, that if you want to have a look at the whole slide show with music and all effects and transitions, you should use option **Preview**. If you want to see the slide show from the current slide, you should use the button nearby the Preview button.

Below the blue rectangle, where the timing of the slide is shown, you can see the same buttons as in the **Main Window**. They are **Create**, **Preview**, **Project Options** and **Customize Slide**, which have already been described (see **The Control Buttons** p. 22).

Beside **Customize Slide** there is one more option, which have not been described yet, **Tools**. When clicking on it, the following dialog box will be opened.

Undo	Ctrl+Z
Redo	Ctrl+Y
Undo All Changes	
Redo All Changes	
Show safe TV zone	
Ignore Objects Not Selected	Alt+I
✓ Hide selection on Pan/Zoom/Rotate	

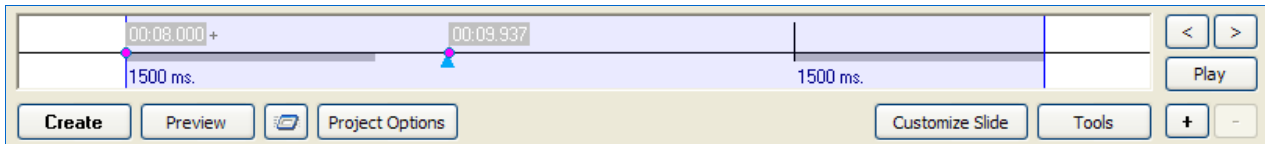
With the help of this menu you can **Undo** and **Redo** some changes and if you don't like your work at all, you can **Undo** or **Redo All Changes** at once.

Besides, you can select such options as **Show safe TV zone**, where you can see the zone, which you will see on TV; **Ignore Objects Not Selected** and **Hide Selection on Pan/Zoom/Rotate**, which are self-explanatory.

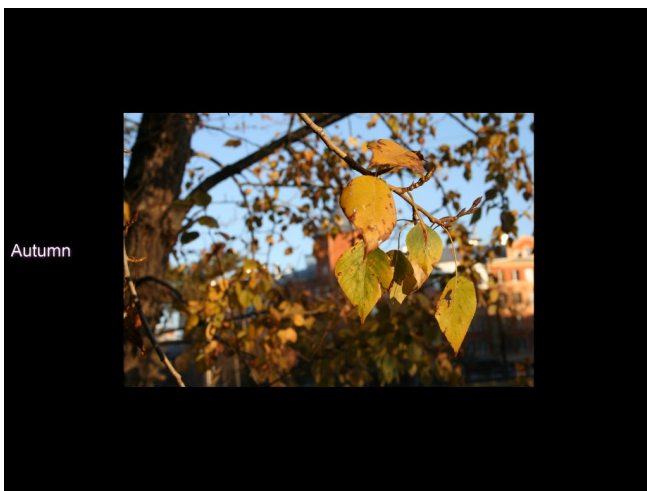
How to create Pan effect

If you want to create **Pan effect**, you should do the following steps:

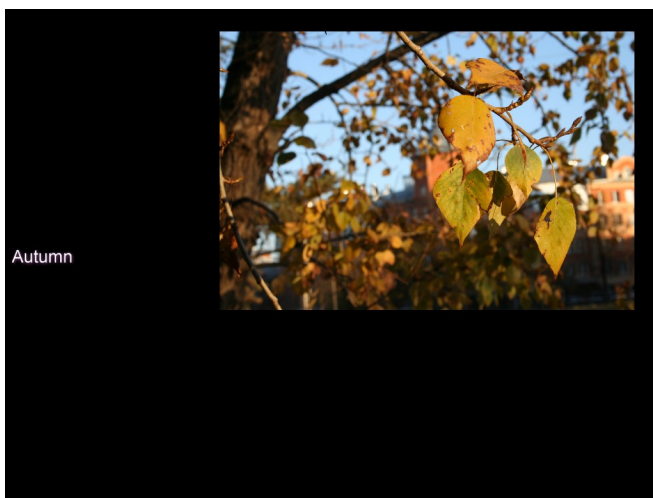
- You should select the picture and click **Object and Animation** in the **Preview** window.
- Then you should choose **Animation tab** in the right upper corner of the main window of the Object and Animation option.
- After that you should set the keypoints on the timeline bar.



- First you should set the keypoint, which is shown in pink and then customize the position and the size of the slide by dragging it with the help of the mouse or using small blue arrows in the **Animation Tab > Pan**.
- The next step is to set another keypoint by dragging the blue triangle, as seen above, to the necessary position and pressing the button **+** for adding the keypoint. When you have added the next keypoint, adjust the position of the slide. That time from one keypoint to another one, the slide will move from one position to the other one. See the example.



That is one position of the slide on the first keypoint.



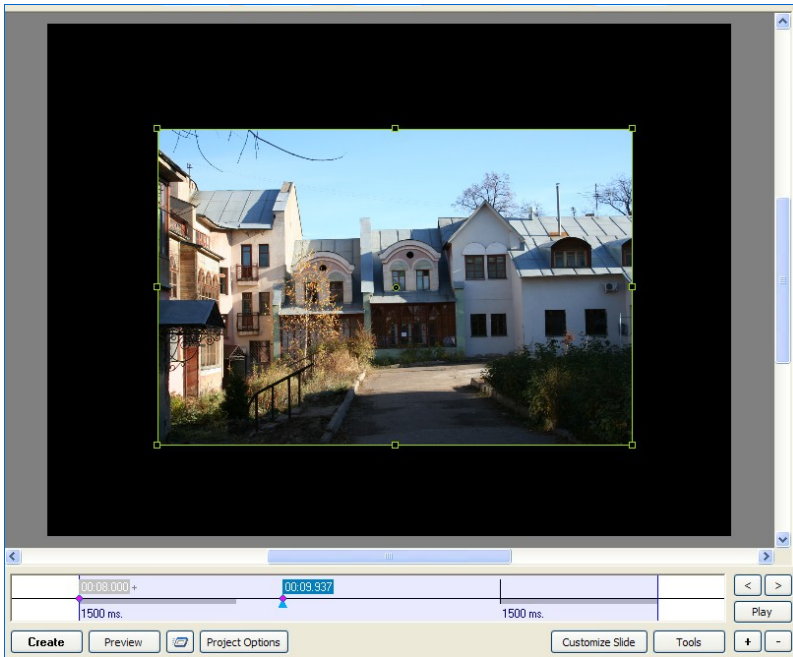
This is another position of the second keypoint.

That is how to create panning of the slide, if you want it in your project.

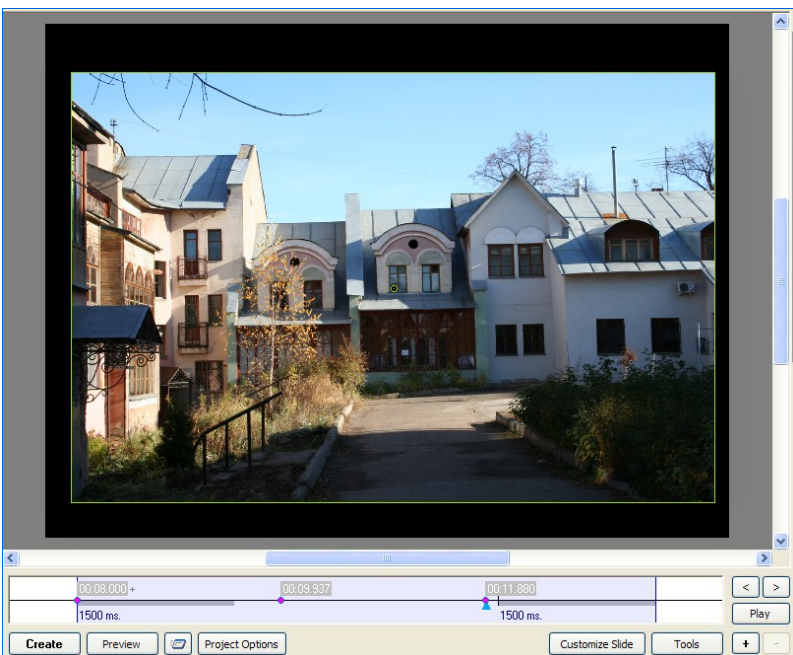
How to create Zoom effect

If you want to create Zoom effect, do the following steps:

- You should select the picture and click **Object and Animation** in the **Preview** window.
- Next you should select **Animation Tab** in the right upper corner of the main window of the Object and Animation option.
- Then you can **zoom (enlarge or diminish)** your image with the help of small **blue arrows** in the **Zoom** tab. You can also do it by dragging the angles of the image with the mouse.
- You can use timeline bar to make animation here. You should set the keypoints on timeline and adjust the position and the size of the slide in each keypoint. See the example.



As you can see from the example, this is the position of the slide in the middle of its duration. The blue triangle is in the middle of timeline beside the second keypoint.



From that example you can see the zoomed picture in another keypoint position. The image can be adjusted with the help of the mouse by dragging the angle of the green rectangle to the necessary direction. You can also do this with the help of blue arrows in the Animation Tab.

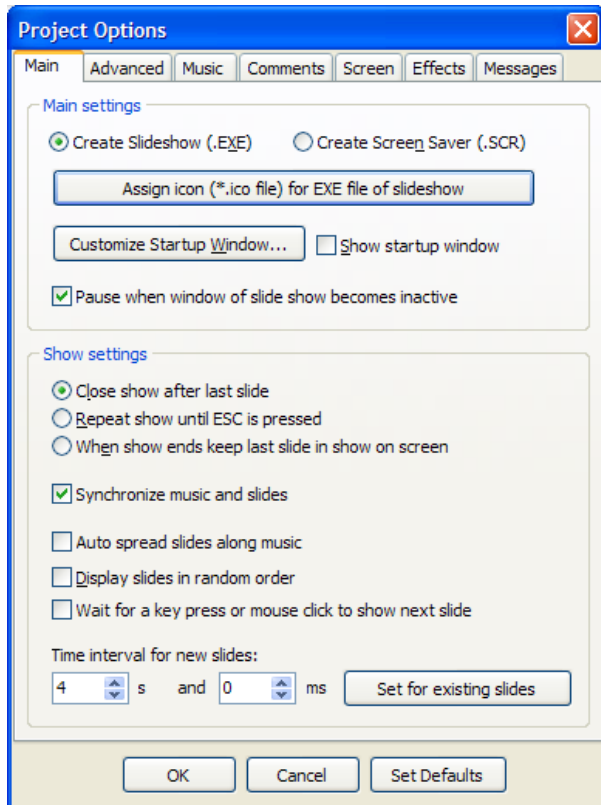
On clicking the **Preview** or **Play** button, you can see how the animation works.

Project Options

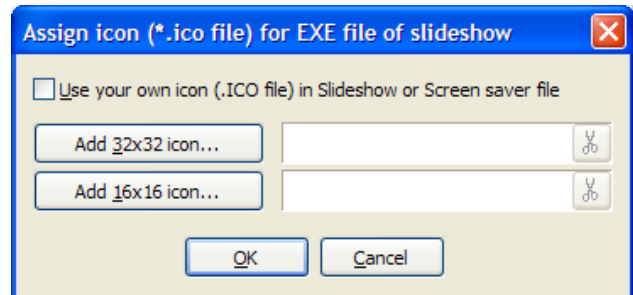
Project Options are the main options, with the help of which you can adjust your slide show. They contain several tabs such as **Main**, **Advanced**, **Music**, **Comments**, **Screen**, **Effects** and **Messages** Tab. It's important, that all these options are for the whole slide show and not for each slide.

Main Tab

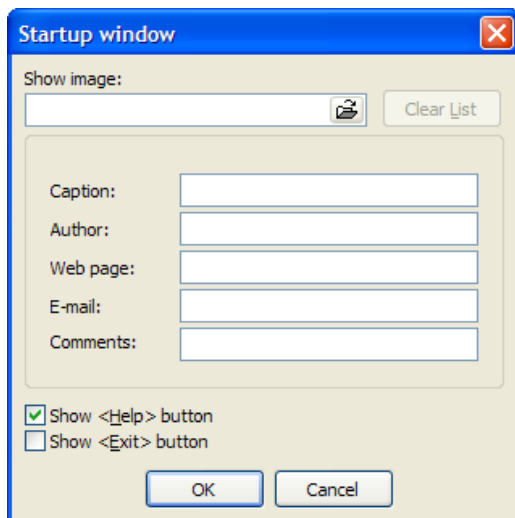
The first tab in the **Project Options** is the **Main Tab**.



- First in the **main settings** you should choose between creating **slideshow** (EXE file) or **screensaver** (SCR file). The default setting is always EXE file, so if you want SCR file, then you should change.
- If you want to use your own **icon** for your slide show, you should press the button **Assign icon (*.ico file) for EXE file of slideshow** and choose the necessary **32x32** or **16x16** icon from your computer.



- Next you can make **startup window show**, if you want it in your slide show. You can customize it by clicking on the same button. In this case the following dialog box will appear.

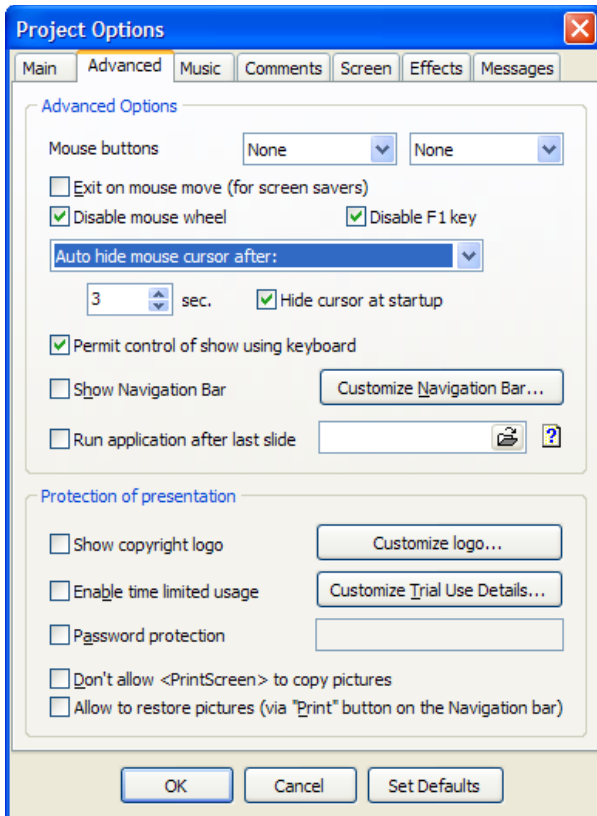


In the **Startup window** you can set the image, if you want, by selecting it from your computer. You can also add some **comments** and **information** about the **author** of this slide show, if you want. You can mark the boxes of showing **Help** and **Exit**, if you need such buttons in your **Startup Window**.

- In the next block **Show Settings** you can select the action after the slide show is over and adjust some other characteristics. You can **Synchronize music and slides**, but it is better to do that with the help of timeline option, which will be described further.
- You may also **Display slides in random order**. In this case, the order, which you have in the slide list, won't be observed.
- You can also select **Time interval for new slides**, you may set the necessary number of seconds. It is better to **Set** this time **for existing slides**. In this case, all slides in the slide show will be shown with one and the same period of time.

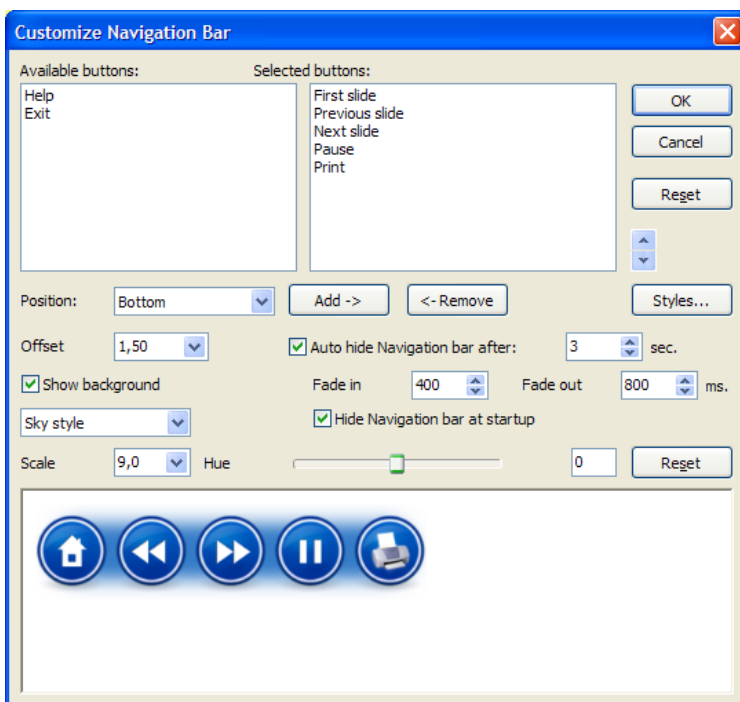
Advanced Tab

Here the following options are represented.

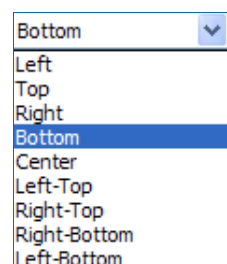


- In **Advanced Options** section you may choose the action on the left/right mouse click. You may choose among seven functions such as **Exit, Next Slide, Previous Slide, Help, First Slide, Pause** and no function or **None**. If you want, you may also **Disable mouse wheel**.
- You may choose to **show mouse cursor** or **hide it at startup** by clicking on the box. You may also set the time in seconds, after which the mouse cursor will be hidden. It is important to note, that if you move the mouse, the mouse cursor will appear again and then will be hidden after the number of seconds, which you have set up.
- The next **Permit control of show using keyboard** gives you an opportunity to control the slide show with the help of keyboard buttons. For example, you may use **PageUp** and **PageDown** buttons for going to the next and previous slide. There is a number of shortcuts, which you may use. It is convenient to use them for quicker work, if you know all or several of them.

- The next button **Show Navigation Bar** is used, if you want to see it in your slide show. You may also **Customize Navigation Bar** by clicking on the button. In this case, the following dialog box will be opened.



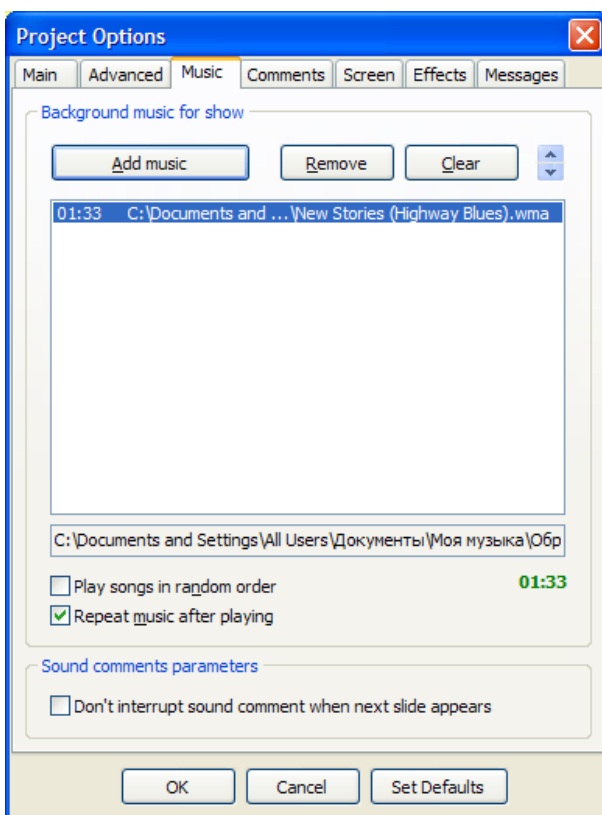
- You can see two small windows **Available** and **Selected Buttons**, where there are seven buttons, which you can select for you Navigation bar: **First Slide, Previous Slide, Next Slide, Pause, Print, Help** and **Exit**. It is very easy to choose them and their order by clicking on them and dragging to the necessary window or using the buttons **Add** and **Remove** below these windows.
- You may also select the **position** and the **offset** of Navigation bar in the slide show.



- If you want, you may **Hide Navigation bar** in a number of seconds, which you can also adjust with the help of arrows beside the button. You may also click to **Hide Navigation bar at startup**.
 - You may also choose the style of Navigation bar between **Air** and **Sky Styles**. If you want you may also open other styles in your computer or create them and then open with the help of the button **Styles**, which you can find on the right of this dialog box. Besides, you can show background. To make it, you should click the necessary box with these words.
 - You can also set **Scale** and **Hue** of **Navigation Bar** by clicking on the necessary buttons and choosing the size and the colour. The result of your adjustment you can see below in the preview box.
- **Run application after last slide** is the option, which gives you an opportunity to run any video, picture or object after the end of the slide show. You may add anything you want from your computer by clicking on the **folder icon** beside the button.
 - In the **Protection of Presentation** options you can make some settings to protect your slide show. They are **Password**, **Enabling time limited usage**, **not allowing to copy pictures with Printscreen** button. You may also **show logo** of your company and customize its position, size and opacity, if you wish. While customizing **Trial Usage Details** (usage of the slideshow), you may set the last date of its usage, the number of runs and even write the message for other users, why the slide show doesn't work any longer.

Music Tab in Project Options

With the help of **Music Tab** you can add music to the whole slide show.



To add music you should click on the button **Add Music**, the dialog box will appear, where you can choose the necessary music files from your computer. It is important, that you can add several files to your slide show. Beside there are two buttons **Remove** and **Clear**. **Remove** helps you to delete one highlighted file from the list. **Clear** helps you to delete all files from the list.

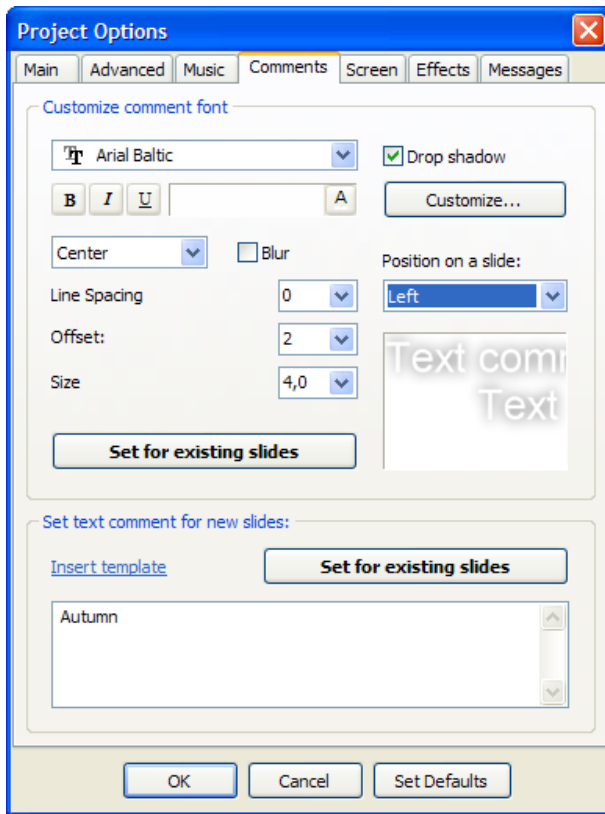
You can have a look at music duration of all files by clicking on the button **Show Music Duration**, which is found below the list of music files.

You have an opportunity in this program to **Play songs in random order**, if you wish, and to **Repeat music after playing**. For this you should highlight boxes with these settings.

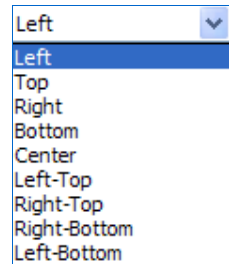
If you add sound comments to your slide show, you can adjust such parameters as **Don't interrupt sound comment when next slide appears**. If this option is not checked, the sound comment for the current slide will be played till the slide is on the screen. When the next slide appears on the screen, the sound comment is interrupted. If this option is checked, the sound comment will be played up to the end.

Comments Tab

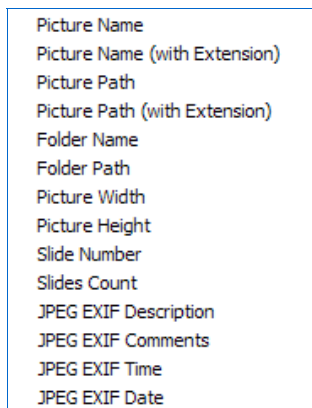
In the **Comments Tab** you have an opportunity to add some comments to the slide show and customize it according to your wish.



- In the first part of the tab, which is called **Customize comment font**, you can select the **font** of your comments, **Bald**, **Italic** or **Underscore** font, **Colour**, **Line Spacing**, **Offset** and the **Size** of the text. On the right to the font adjustments you can select the **Position** of the comments on a slide by clicking on the arrow, where drop-down menu will be opened. You may set from the variety of choices: on the **Left** or on the **Right**, at the **Top** or at the **Bottom** and so on. You may either add **Drop shadow**, if you check it and **Customize** its **Colour**, **Opacity**, **Angle**, **Size** and **Spread**, if it is necessary. You shouldn't forget to **Set for existing files** all your settings.

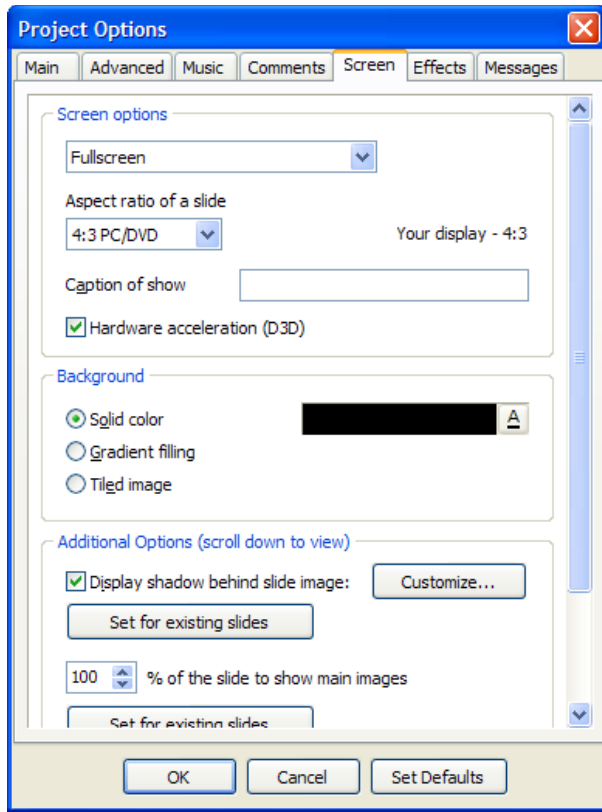


- In the second part of the Comments Tab **Set text comments for new slides** you may either use comments templates or add new ones according to your choice. If you click on the button **Insert template**, the drop menu will be opened. Here you can choose, what you want, and the necessary information will be added automatically.



Screen Tab

Screen Tab is divided into three sections: **Screen Options**, **Background** and **Additional Options**. In the first section you may adjust the images to the screen.



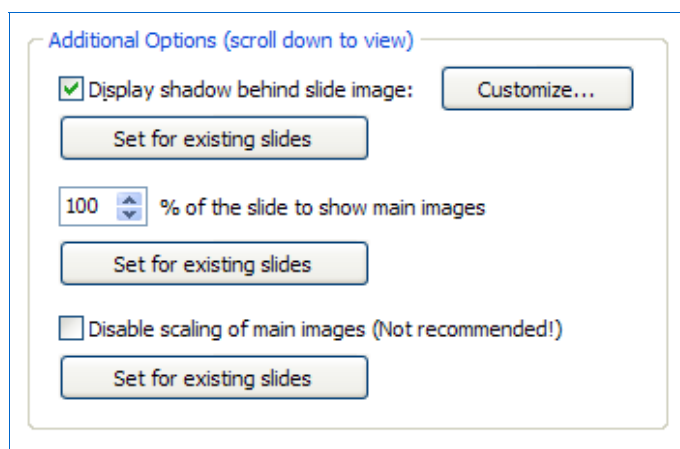
- First you may choose the **Fullscreen** mode or **Windowed** mode. The default is always **Fullscreen**. Here you can also set **Aspect ratio of a slide** according to your monitor size and form. For normal monitors and not wide television screens the aspect ratio is **4:3 PC/DVD**. If you want to set another ratio, click on the arrow and the drop-down menu will be opened.

You may choose any ratio from the existing ones, but if you need something different, you may click on **Custom** and set the necessary figures manually (See **Aspect Ratio** p. 43).

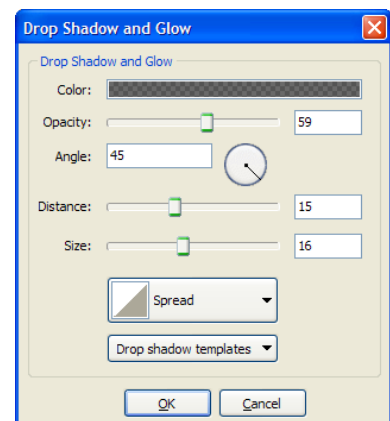
The next option **Caption of show** works only for the **Windowed Mode**. If you have chosen **Fullscreen** mode, then this option is of no use to you.

Hardware acceleration option should be generally checked, if you create the show with animations. It gives you an opportunity to watch your slide show with better quality.

- In the **Background** Section you may set the background as **Solid color**, **Gradient filling** or **Tiled image**. You should remember, that if your images fill the whole screen, then this option is of no use to you. But if the images don't fill the screen, you may select among three variants, which have been already described earlier (See **Customize Slide**, **Background** p. 24).
- In the third section **Additional Options** first you may see **Display shadow behind slide image**. If this option is checked on, you can also **Customize** it.



It is important, that this function also works only, when the image doesn't fill the screen. Don't forget to click on the **Set for existing slides** button to set this option for the whole slide show. When you click on the **Customize** button, the following dialog box will appear.



Here you may select the necessary **Colour** of the shadow, **Opacity**, **Angle**, **Distance** from the Image and **Size** of the Shadow.

The **Percentage of the slide to show main images** is the option, which gives you an opportunity to watch your slide show at any size on the monitor you wish. It is better to experiment with this option to see the difference.

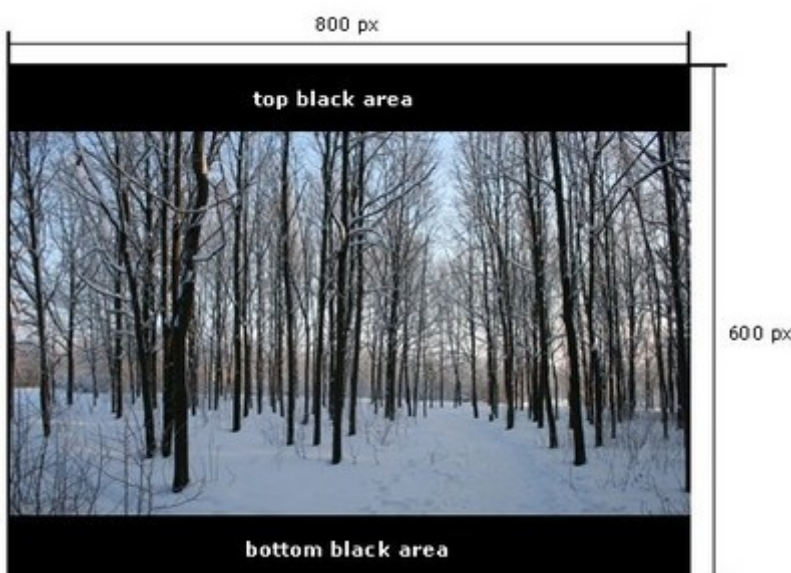
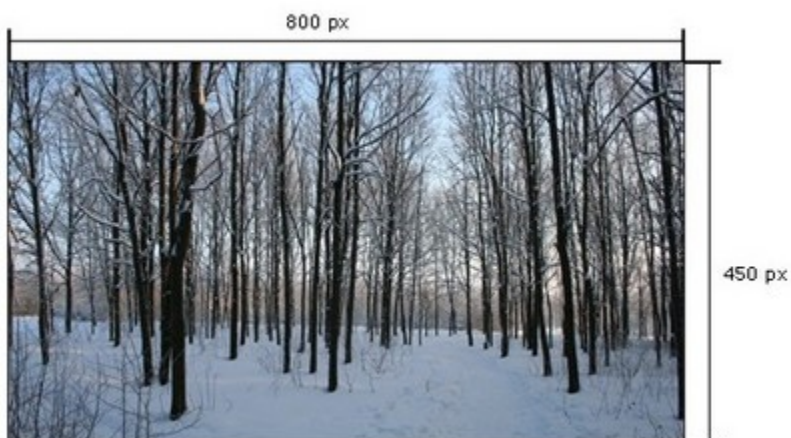
The last option **Disable scaling of main images (Not recommended)** should be normally unchecked. The reason is that while playing this show on the other computers and this option is checked, the slides may be shown with different resolutions and the images may be larger or smaller. To avoid this, it is better not to use this option. Of course, if you want your slide show run at your own resolution, you can check disable scaling.

Aspect Ratio

This article will help you to prepare your slide-shows for burning on DVD by using **PicturesToExe** and **Video Builder**. Let's try to explain what the difference between **DVD aspect ratio** and **slide-show aspect ratio** is. DVD aspect ratio sets by Video Builder in Project Options window. Slide-show aspect ratio sets by PicturesToExe in Project Options -> Screen tab.

Encoding DVD aspect ratio 4:3 - Slide-show aspect ratio 16:9

Here is the example of what happens with slide shows if you'll encode presentation with 16:9 (800x450) aspect ratio (slide-show aspect ratio) with 4:3 aspect ratio (DVD aspect ratio).



1. Slide-show aspect ratio 16:9.
2. DVD aspect ratio 4:3.

4:3 TV display example

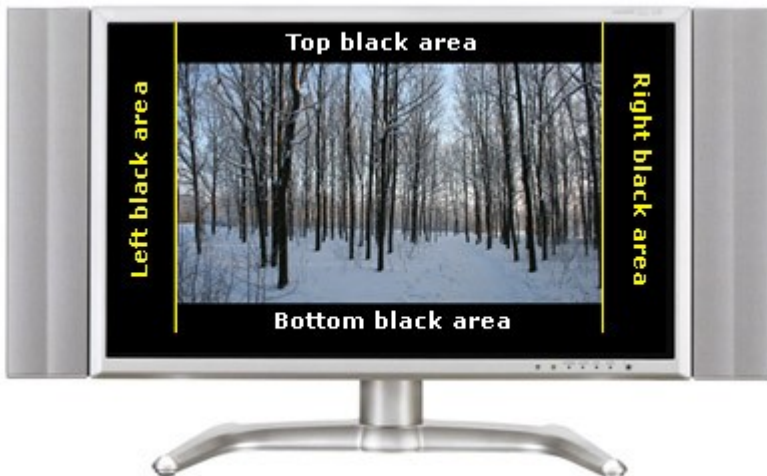
While viewing this DVD on TV set with 4:3 sides, video will look like encoded before (picture below).



1. Slide-show aspect ratio 16:9.
2. DVD aspect ratio 4:3.
3. TV display aspect ratio 4:3

16:9 TV display example

While viewing this video on widescreen TV display, video will look like with 4:3 aspect ratio. This means, that TV display will add black areas on the left and on the right sides of the video to make aspect ratio as 16:9. Look at the picture below.



1. Slide-show aspect ratio 16:9.
2. DVD aspect ratio 4:3.
3. TV display aspect ratio 16:9.

Encoding Slide-show aspect ratio 4:3

Here is the example of slide show with aspect ratio 4:3. Encoding result of it (DVD aspect ratio 4:3) will look original without any black areas.



Encoding result will look the same.



1. Slide show aspect ratio 4:3.
2. DVD aspect ratio 4:3.
3. TV display aspect ratio 4:3.

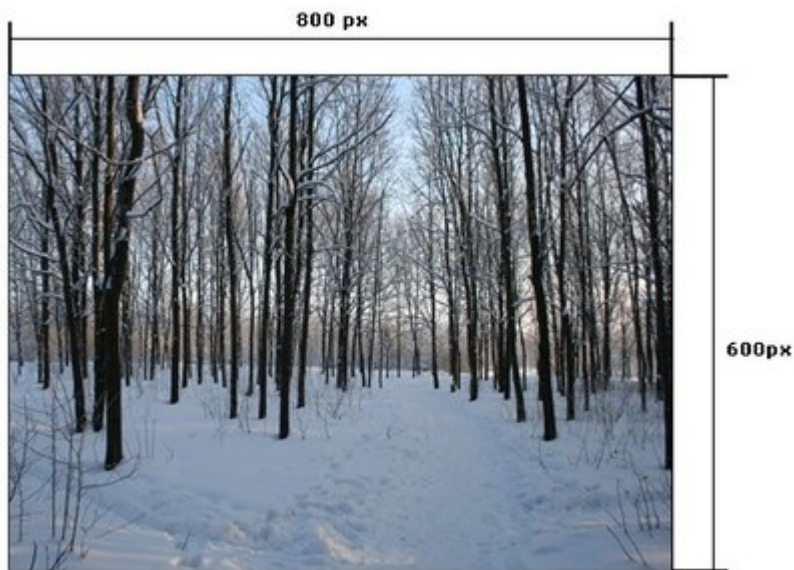
This is the example how such DVD will look with 16:9 aspect ratio display.



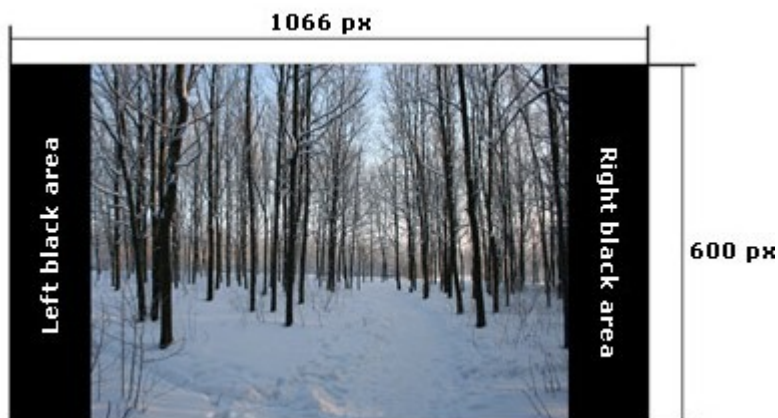
1. Slide show aspect ratio 4:3.
2. DVD aspect ratio 4:3.
3. TV display aspect ratio 16:9.

Encoding DVD aspect ratio 16:9 - Slide-show aspect ratio 4:3

For example your slide-show has 800:600 pixels dimension (4:3).



Source slide-show (4:3 aspect ratio).



1. Slide-show aspect ratio 4:3.
2. DVD aspect ratio 16:9.

16:9 TV display example

As you can see 16:9 TV display shows this video as it looks after encoding.



1. Slide-show aspect ratio 4:3.
2. DVD aspect ratio 16:9.
3. TV display aspect ratio 16:9.

4:3 TV display example

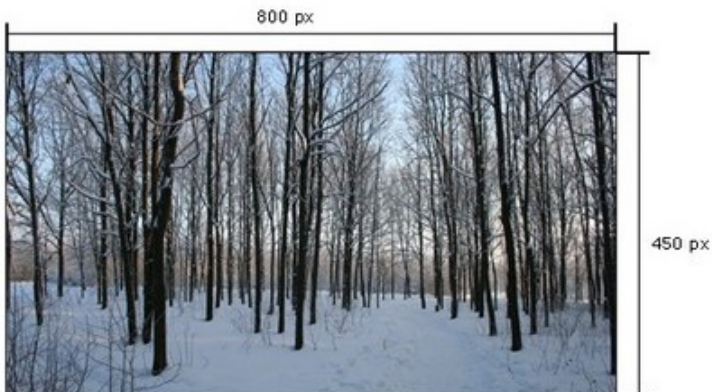
As soon as we try to see this video on the TV display with 4:3 sides we can find black areas at the top and at the bottom of our DVD. These areas are added by TV display to make video aspect ratio 4:3.



1. Slide-show aspect ratio 4:3.
2. DVD aspect ratio 16:9.
3. TV display aspect ratio 4:3.

Encoding Slide-show aspect ratio 16:9

Here is the example of source slide-show with aspect ratio 16:9. Encoding result (DVD aspect ratio 16:9) will look original without any black areas.



Source slide-show (16:9 aspect ratio).
Encoding result will look the same.

This is the example how such DVD will look with 16:9 aspect ratio display.



1. Slide show aspect ratio 16:9.
2. DVD aspect ratio 16:9.
3. TV display aspect ratio 16:9.

This is the example how such DVD will look with 4:3 aspect ratio display.



1. Slide show aspect ratio 16:9.
2. DVD aspect ratio 16:9.
3. TV display aspect ratio 4:3.

How auto aspect ratio mode works in VideoBuilder

This issue is about how **Video Builder** auto aspect ratio mode works.

Each of the videos being located on DVD disc may have one of the following aspect ratio 4:3 or 16:9. VideoBuilder can't burn DVD with slide-shows using different aspect ratio. If you set aspect ratio 4:3 (VideoBuilder options) in options all presentations will be in 4:3, if you set 16:9 (VideoBuilder options) all of them will be 16:9.

Even if one of all presentations has aspect ratio, which differs from 16:9 (slide-show aspect ratio), all of them will be with 4:3 aspect ratio. Only in case, when all slide-shows have 16:9 aspect ratio, all slide-shows will be in 16:9. Therefore if you create DVD disc for wide width display there is the reason to set 16:9 aspect ratio for all slide-shows.

Custom aspect ratio slide-show

In case if slide-show has aspect ratio, which differs from 4:3 and 16:9 (for example 5:4) it will fit to the nearest aspect ratio (see the picture below).

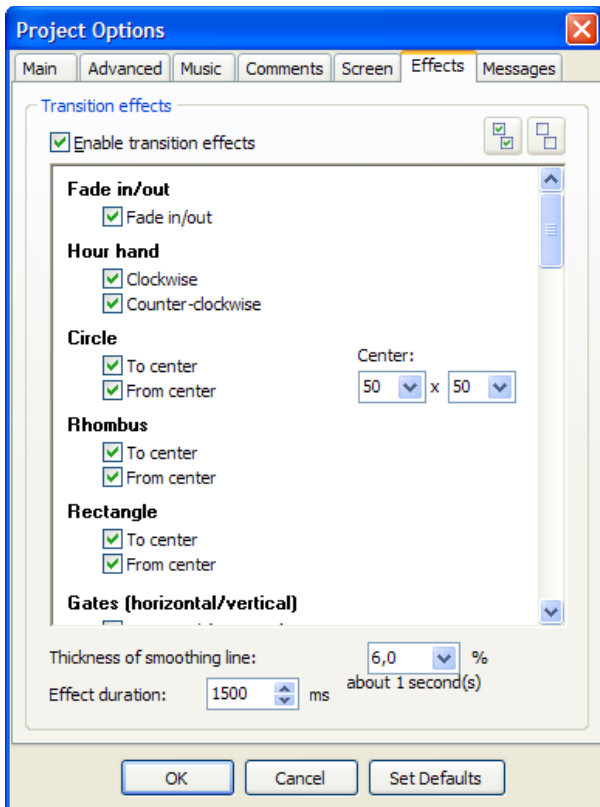


Photos resolution and slide-show aspect ratio

This is the fact, that there is no relation between photo dimension and slide-show aspect ratio. As a default, the value for slide-show aspect ratio is 4:3 (for new project) and in case, if you add some photos with 16:9 aspect ratio, the slide-show will not change the aspect ratio automatically. To change slide-show aspect ratio go to the Project options -> Screen tab and set it manually according to the dimension of your photos.

Effects Tab

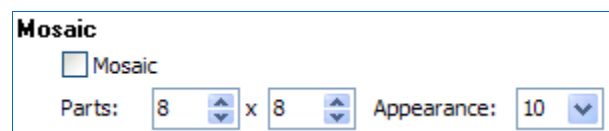
With the help of **Effects Tab** you can add different transitions between slides and to make your show animated.



When checking the box **Enable transition effects**, all transition effects become highlighted and you may choose among them. It is necessary to note, that if you want to see how these effects work, it is better to experiment with them.

The first several effects such as **Fade in/out**, **Hour Hand**, **Rhombus**, **Rectangle**, **Gates**, **Page Effect**, **Push** and **Slide Effects** and some others are self-explanatory. **Circle** effect has one peculiarity: you may change the **Center** here with the help of small arrows, which are found beside. If you scroll the **Effects Tab** down, you will see such effects as **Mosaic**, **Curling of Page**, which should be described.

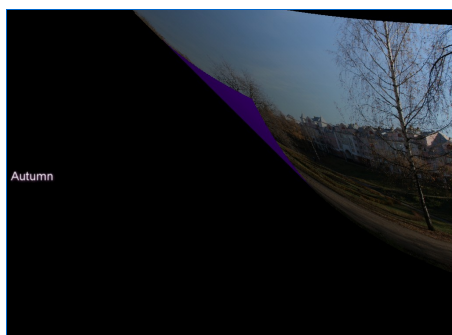
Mosaic has different appearances and can consist of different number of pieces, which can move with different speed.



You can set any number of pieces. If you want large pieces, you should set less number of them and vice versa, if you want small ones, you

should select more pieces. It depends only on your choice, try to experiment.

Curling of Page can also be different according to the radius, which you choose. To see the difference, have a look at the examples below.



As you see, in the first picture the radius is large and on the second one it is small. If the radius is large, the line is more soothing, if it is small, the line is sharper. Besides, you may also set the colour of the back side as seen from the examples.

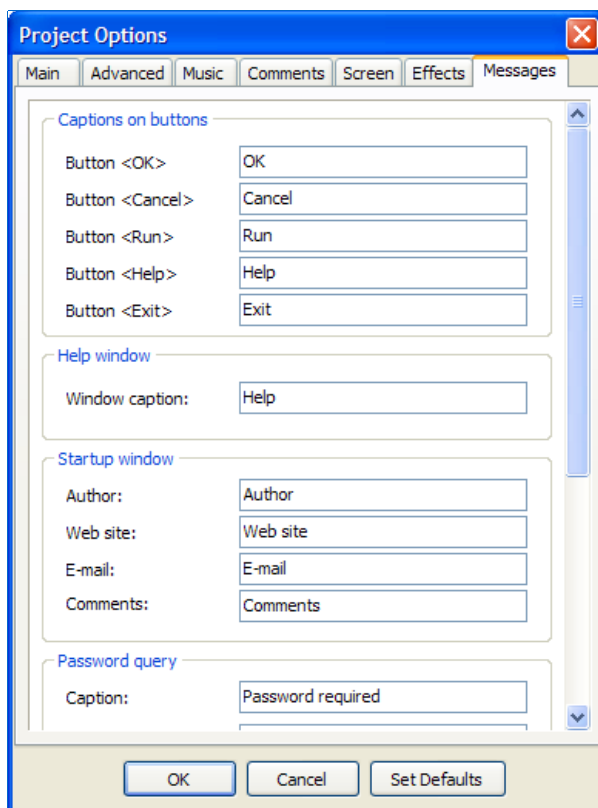
As seen in the **Effects Tab**, you may also set the **Thickness of smoothing line** and **Effect duration**, which is given in milliseconds, by clicking on the small arrows beside the options.



In the first picture the default setting of thickness of smoothing line is 6 %. In the second is 52%.

Messages Tab

In **Messages Tab** you can add messages to any parts of your slide show.



There are several section here: **Captions on Buttons**, **Help Window**, **Startup window**, **Password query**. If you scroll down, you will also see such sections as **Expired Trial** and **Print Dialog**. All sections are self-explanatory and give you the necessary information. But it is important to explain some sections.

In **Password query** you can add the image, which tells the user of your slide show to enter the password.

In **Expired Trial** you can add message, why the show cannot be run any longer and give some instructions what to do further.

The messages are added already by default here. But if you wish you can rename them by adding your own information. If there is not enough space, it does not matter much, you may continue typing.

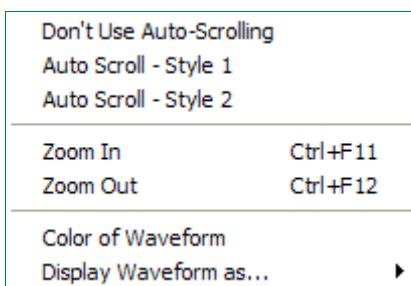
Timeline Operation

If you want to add background music to your slide show, then customize it and synchronize the slide show to music, you should use **Timeline Option**, which is found in the **Main Window** of PicturesToExe in the **Control Buttons** panel.

The main function of the **Timeline Option** is to synchronize a number of slides to music. There are several ways to do that:

- to auto spread slides along music at equal intervals of time;
- to coincide slides with the certain points in the sound track;
- to coincide slides with the certain points in the sound track not only with music but also with some commentary.

Some **timeline options** are represented in the main window menu **View**. If you click on it, the following dialog box will be opened.



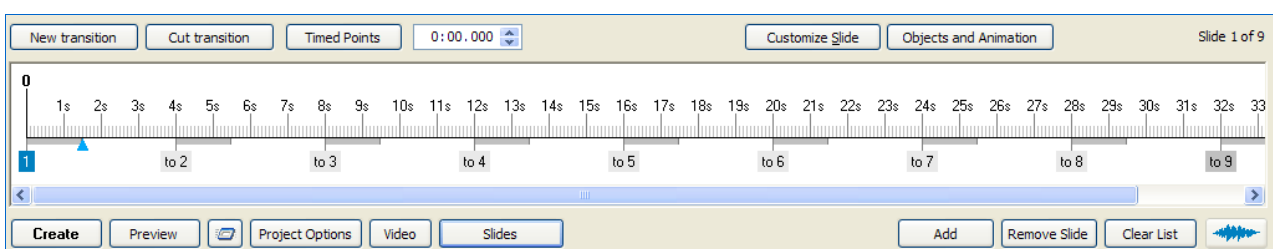
Here you can select the **Style** of **Auto Scroll** between **Style 1** and **Style 2** or **Don't Use Auto-Scrolling** at all. The difference between two styles is in the presentation of the synchronization while watching it on the timeline bar.

You can also make **Zoom** of the timeline window **In** or **Out** by clicking on these buttons or using shortcuts, which you can see opposite the words.

You may also choose the **Colour** of the **Waveform**. By clicking on it, the dialog box will be opened, where you can choose the necessary colour. Besides, you can select **Display Waveform** in two ways.

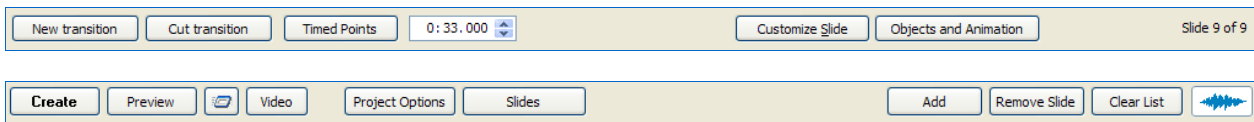
While adjusting your slide show in the **Project Options**, tick the synchronization of music to the slides in the **Main Tab**. If you make this, then in the **Customize Synchronization** window, the default is **Synchronize music and slides**. Besides this, you may tick **Auto spread slides along music**. In this case, the timeline window will be greyed out and the slides will be equally distributed along the whole music track. For example, if you have sound track, which lasts 1 minute, and you have 10 slides in your slide show, then the intervals between the slides will be 6 seconds.

To see the **timeline** and **synchronization** window, you should click the button **Timeline**, and the following window instead the **Slide List** will be opened. The timeline window is represented below.

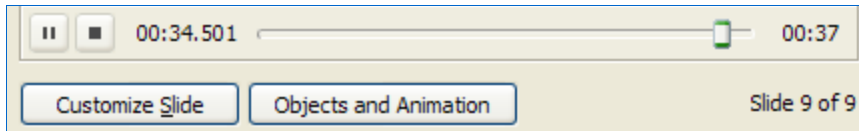


Here you can see slides, which are represented by figures below the line. The figures above the line indicate the **seconds**. The beginning of the timeline is **zero**, the end depends on the duration of the sound track and may be any number of seconds or minutes. **Thick grey lines** beside each slide indicate **transition time**. You can also see a **blue triangle**, with the help of which you can go from one slide to the other one. It is important to note, that you can change the position of the slides by clicking on a number of the slide and dragging it to the necessary place. Besides this, you can also change the time of transition by clicking on the end of the grey line and dragging it to the right or to the left, it depends on whether you want to make transition longer or shorter.

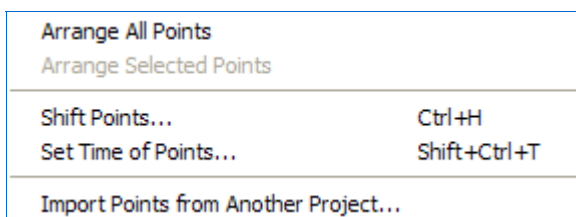
Now it is necessary to describe the buttons, which are situated above and below the timeline window.



- **▶ Play** button is situated above the options **Customize slide** and **Objects and Animation** in the **Preview window** and is used to begin the preview of your slideshow in a small preview window in the right upper corner. This button plays two roles: **Play** and **Pause**. If you click on **Play** it will turn **⏸ Pause** and vice versa. When you click on **Play**, the blue triangle will stand at the beginning of the timeline and will move to the right on the bar.

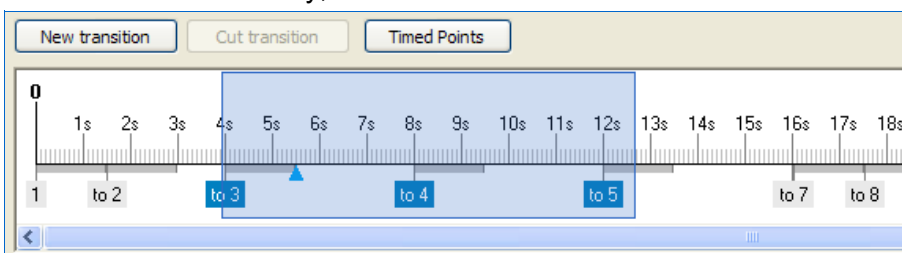


- As you can see from the figure above, next to the button **Play/Pause** there is button **Stop**. You should remember, that if you click on **Stop** and then on **Play** button, the preview will start not from the beginning, but from the place where the cursor was situated. If you want to watch the preview from the beginning, you should do the following:
 - Click **Play** for previewing the slide show;
 - As soon as **Playback** begins, click **Pause**;
 - Drag the blue triangle to the beginning and click **Play** once again.
- **New transition** is the option, which gives you an opportunity to add new keypoints to the necessary place of your slide show and timeline. It is important to know, that for adding the keypoint you should set the blue rectangle to the necessary place on the timeline bar and then click on the button **New transition**. The slides and their transitions will be moved from their old places to new ones.
- If you want to delete the keypoints you should use the option **Cut transition**. But you should remember, that the keypoints will not be deleted, but just moved to the end of the slide show. If you press the button **New transition** in this case, the keypoints, which were deleted earlier, will be moved to their previous places.
- Next option **Timed Points** includes the following functions:

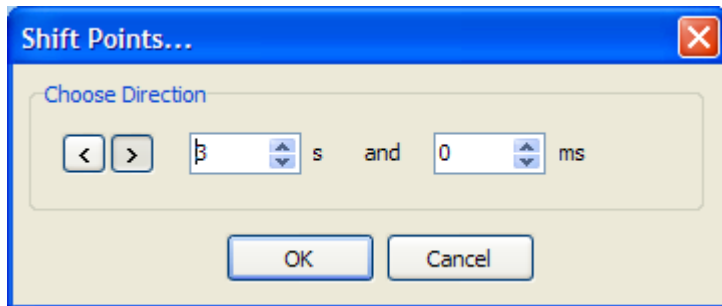


- **Arrange All Points** helps you to set all points on the timeline bar in the equal intervals of time along the sound track.
- **Arrange Selected Points** is greyed out, because there are no selected keypoints. But if you select some points, this option will be highlighted and you can use it. It functions in

such a way: you should select the necessary keypoints and then click **Arrange Selected Points**, in this case, all selected points will be set at equal intervals of time. Of course, you can do this manually, but it is much easier to set them automatically.



- **Shift Points** is the option, which gives you an opportunity to move all or selected points to the necessary direction, to the right or to the left on the necessary number of seconds. For doing this you should select the keypoints and click **Shift Points**. In this case the following dialog box will be opened:

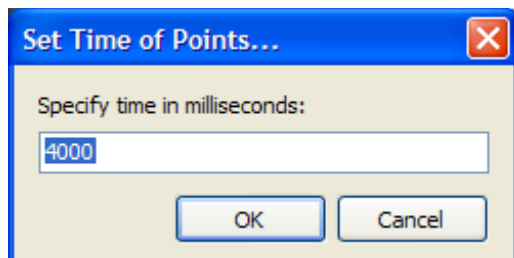


Here you can **Choose Direction**, where to shift the points, the first arrow gives you an opportunity to shift to the **left**, the second one – to the **right**.

Then you can set a number of **seconds** and **milliseconds**, on which you wish to shift the points.

After that, click **OK** and see the result.


- **Set Time of Points** is the option, which gives you an opportunity to set all the slides or just selected slides at the intervals, time of which you can set manually. To do this, you should select the slides, if you need, and click button **Set Time of Points**. In this case, the following dialog box will be opened:

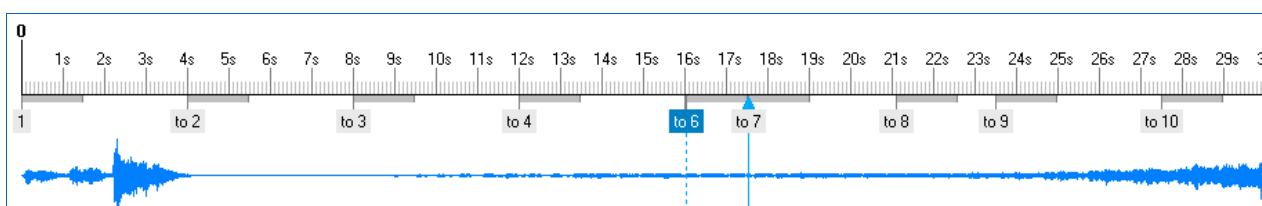


Here you can set a number of **milliseconds**, which the slide will be shown in the slide show.

- **Import Points from Another Project** is the option, which can be very helpful, if you don't want to make a new timeline. You may just **import points**. To do this, you should click this button and then choose the project, from which you want to import the keypoints. It is important to know, that the number of slides in these two projects should be equal.

- Next to **Timed Points** you can see a small box with numbers, which show the time of the chosen slide in the timeline bar.

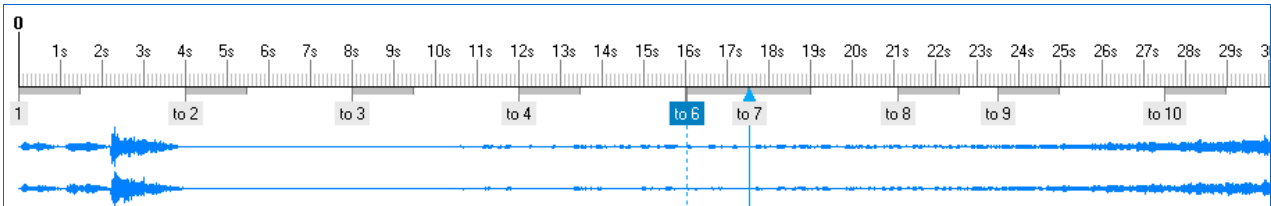
- The first buttons below the timeline bar is **Create, Preview, Video, Project Options** were explained earlier.
- Options **Add, Remove Slide, Clear List** are related not only to the **Slide List**, but also to the **Timeline**. It depends on what you are adjusting. With the help of these options you can **Add** slides to the timeline, **Remove** one or more slides and **Clear List**. In the last case, all the slides will be deleted from the timeline and you can set a new timeline, if you wish.
- Next to these three options you can see the button, which is called **Waveform**. Clicking on it,  you will see the waveform of the sound track on the timeline bar. It is important to know, that the waveform will appear only if the soundtrack is added.



- It is necessary to note, that you can adjust the color of the waveform in the **View Menu > Timeline Options**. Besides, you can select the **Display** of the **waveform** in two ways.

- Mixed channels
- Left and Right channels

The difference is only in the way of presentation the waveform. In the example above you can see the waveform with **Mixed channels**. Below you can see the example with **Left and Right channels**.



After having adjusted all these options, you can see the result either by clicking button **Play** (in this case, you may see the slide show in a small preview window) or by clicking button **Preview** (in this case you may see the slide show fullscreen).

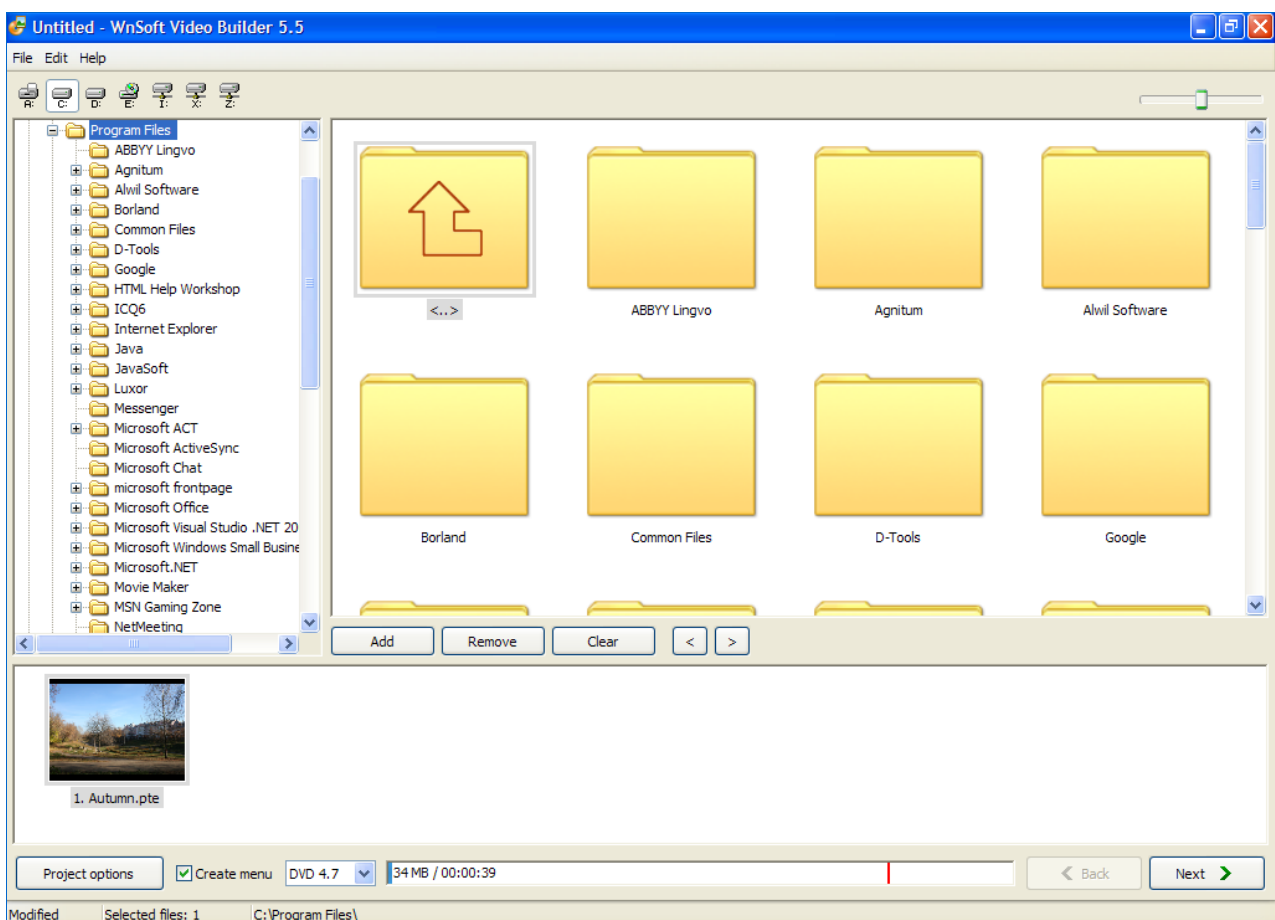
Video Options

If you have a look at the **Control Buttons**, you will see **Video** button. When clicking on this button, you will see the window, where you can select between **DVD-Video** or **AVI file**.



Video Builder (DVD video disc)

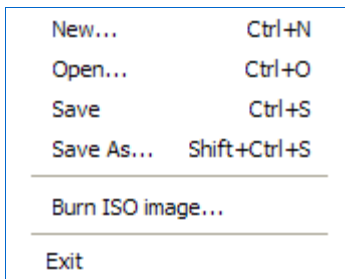
If you choose to create **DVD-Video** in **Video** button, another program, which is called **Video Builder**, will be opened.



At the upper left corner of the **main window** there are three **main menu**: **File Menu**, **Edit Menu**, **Help Menu**.

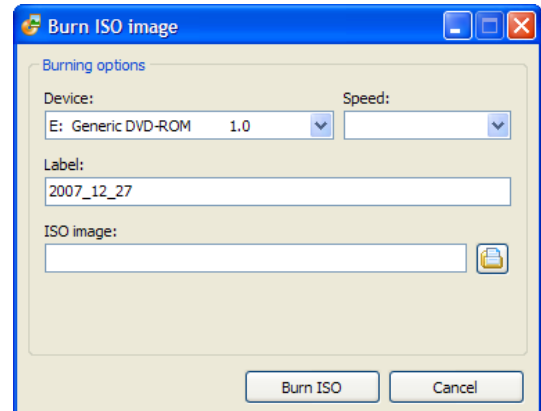
File Menu

When clicking on the **File Menu**, the following drop menu will be opened.



Here you can make a **New** file, **Open** other files, **Save** and **Save As** your work, **Burn ISO image**. When clicking on the **Burn ISO image**, the following window will appear.

The **Burning Options** are **Device**, with the help of which you will burn, **Speed**, chosen by you, **Label** and the last, you should choose the place for **ISO image** on

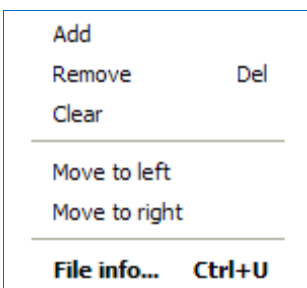


your computer. Then click **Burn ISO** or **Cancel**, if you don't want to do anything here.

It is important to note, that **ISO image** is a special file, which is used to run the project, which you burn on the disc, without this disc.

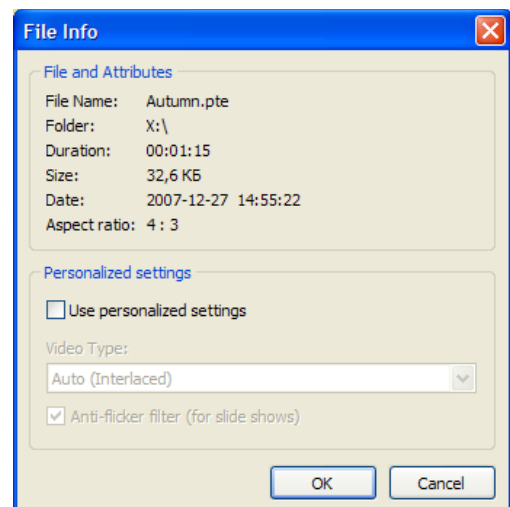
Edit Menu

With the help of this menu you can make some operations with the projects.



You can **Add** or **Remove** projects, **Clear** the project list at all, **Move** to the **Left** or to the **Right** from one project to the other. You can also see **File Info**. If you click on the **File Info**, the following window will be opened.

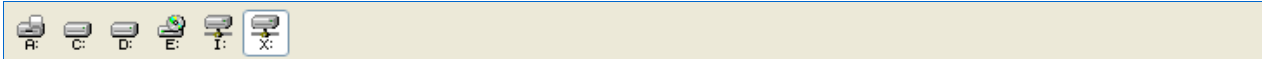
Here you can see the information about the chosen project: **File Name**, the place, where it is situated on your computer, the **Duration** of the sound track, the **Size**, the **Date** of creating and



Size, the **Date** of creating and **Aspect Ratio**, how it would be seen from the monitor. In **personalized settings** you can choose **Video Type**, the default is **Auto** always, and you can also choose whether to check **Anti-Flicker filter** or not.

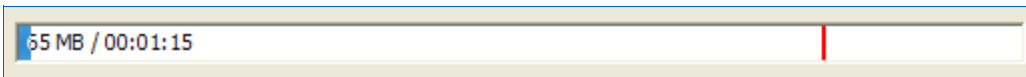
Help menu gives you hyperlinks to the official PTE site, where you can find any information about this programs and ask questions, if you have any.

Below the **main menu** there is the **drive selector**, where you can choose the necessary drive.

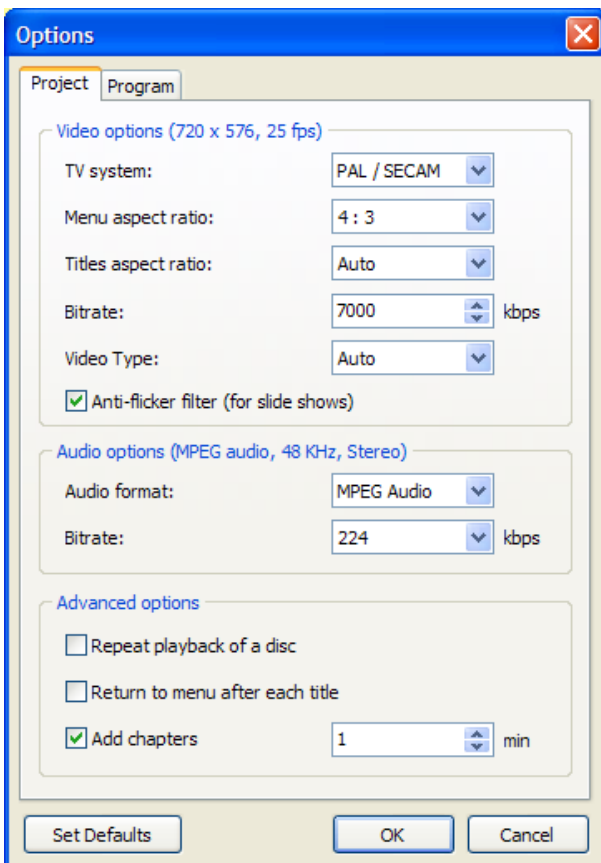


As seen from the figure above, drive **X** is chosen.

Below the **drive selector**, you can see the **file directory tree** of the chosen drive. Nearby there is the **preview window** for a selected file or project. Below the preview window you can see the same buttons as in the **Edit Menu: Add, Remove and Clear**. Then the project list is situated, where the chosen projects can be seen and their duration and size are shown below in a special box, shown below. Red vertical line indicates the end of free space on the disc.



On the left from this box there are several options, which should be described. The main of them is **Project Options**.

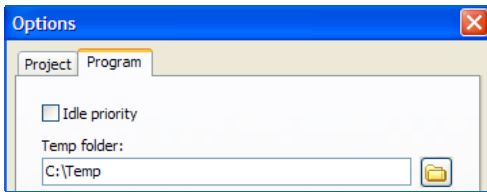


- In the **Project Tab** of the **Options** there are several sections. In **Video options** first you should choose **TV** system according to the country you live in. There are two systems: **PAL/SECAM** is used in the **Europe** and **NTSC** is used in the **North America, Japan** and some other countries.
- Next you can choose **Menu** and **Title aspect ratio**. The default for **Menu aspect ratio** is **4:3** for ordinary televisions, but you may also select **16:9** if you have new televisions such as LCD or flat panel TV screens. The Aspect ratio for them differs from the old ones. The default of **Title aspect ratio** is **Auto**, but you may also select **4:3** or **16:9**. You should remember, that it is the aspect ratio not for your slideshow, but only for the menu and title.
- Next you can choose **Bitrate**, the default is **7000 kbps**, but if you have the necessity, you can change this figure.
- The next **Video Type** can be also changed. There are two types of them: **Interlaced** and **Progressive**. The default is **Auto**, that is **Interlaced**. But if you have a new TV, such

as LCD or flat panel televisions, you`d better select Progressive video type.

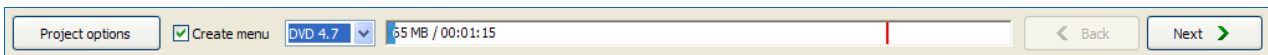
- In **Audio options** you may select the necessary **Audio format** and its **Bitrate**. Here it is better to use default settings to avoid a bad quality of sound track.
- In **Advanced Options** you can customize such settings as to **Repeat playback of a disc** or not, to **Return to menu** after each title or not. You can also add chapters to your DVD-disc and set the number of minutes for each chapter.

- In the **Program Tab** you can choose the place for the temporary file of your project.

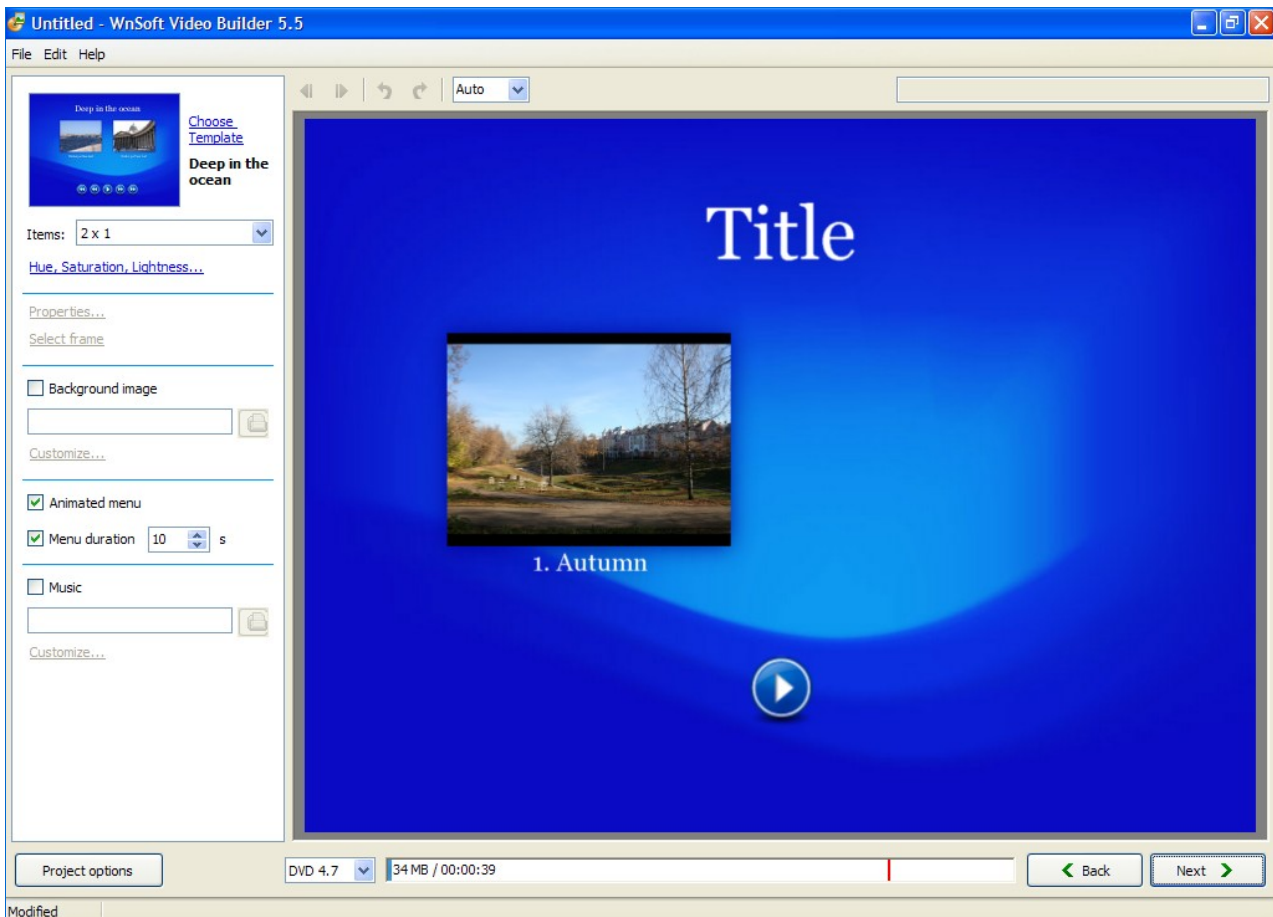


- The next buttons are **Set Defaults**, **OK** and **Cancel**, which are self-explanatory.

Nearby the **Project Options** button you can see several options.



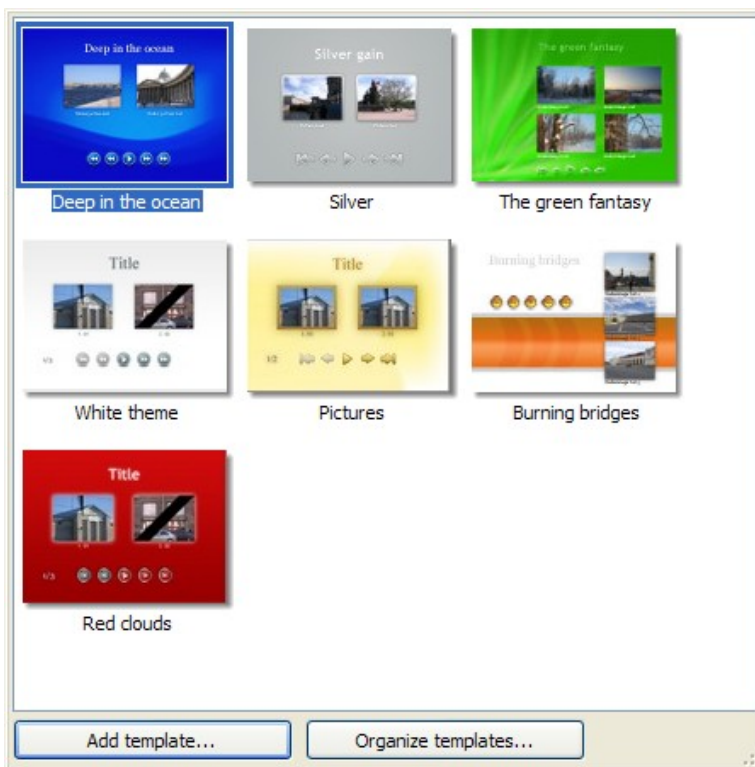
You can check **Create menu** box, if you want the menu on your DVD-disc. Next you can choose the **size** of your DVD, the default is **4.7**, but if your disc is larger or smaller, you can choose two other parameters **8.5** and **1.4**. Next you can see the **bar**, which shows the **total space** on the disc, as has been said above. Here you can see the **blue colour**, which indicates the space occupied, and the **white colour**, which indicates the free space. The **red line** shows the end of the free space on your disc. At the end of the bar, there are two buttons **Back**, which is greyed out, and **Next**, which are also self-explanatory. **Next** gives you an opportunity to go **forward** and **Back - backwards**.



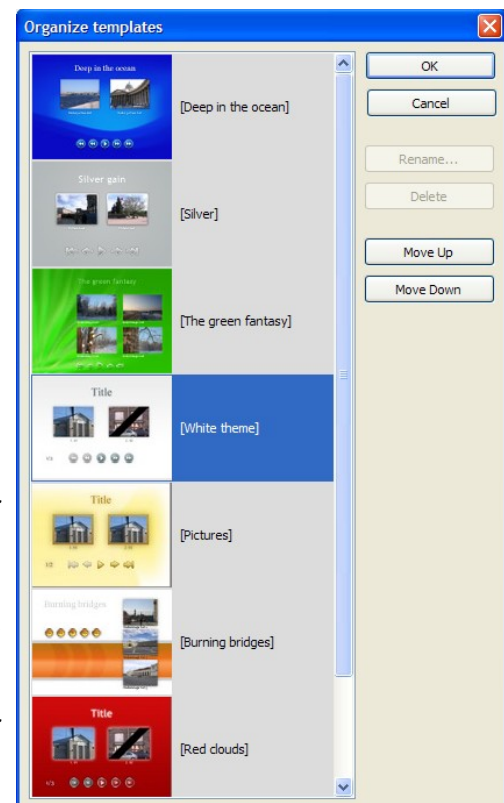
When you have selected the projects, which you want to burn, it is necessary to click **Next** button and the following window, which is shown above, will be opened. Here you can customize the **menu** for your DVD-disc, if you want it. You should remember, that if you don't check the box **Create menu** in the previous window, this window won't be opened and just the next one will be opened at once.

It is important to note, that the word **Title** can be changed by clicking on it and typing the necessary words.

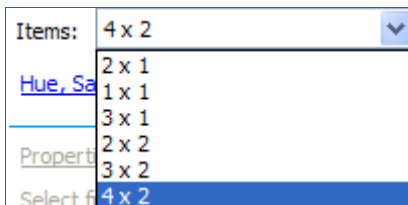
- First you should choose the background for your menu. There are several templates, to have a look at it, you should click on the picture and you will see the following window.



Here you can see the templates and choose among them. At the bottom of the window you can see two buttons **Add template** and **Organize templates**. The first one gives you an opportunity to add any image or photo from your computer. The second one helps you to choose the order of the templates and rename or delete the images. For better understanding have a look at the figure below.



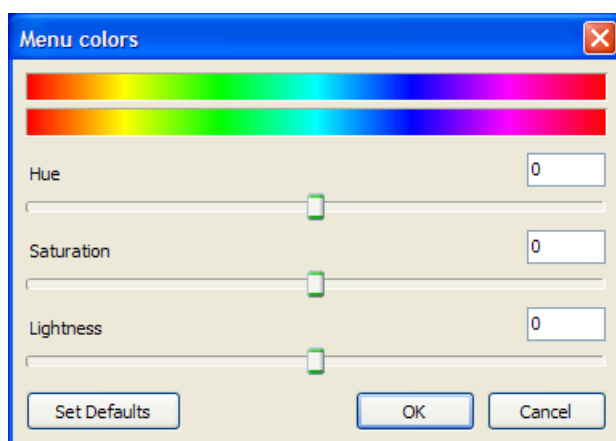
- Next you may choose the number of **items** and their location on the menu window.



The more items you want to add, the less size they are. The location of them also depends on the number of the projects you have added. It is better to experiment for better

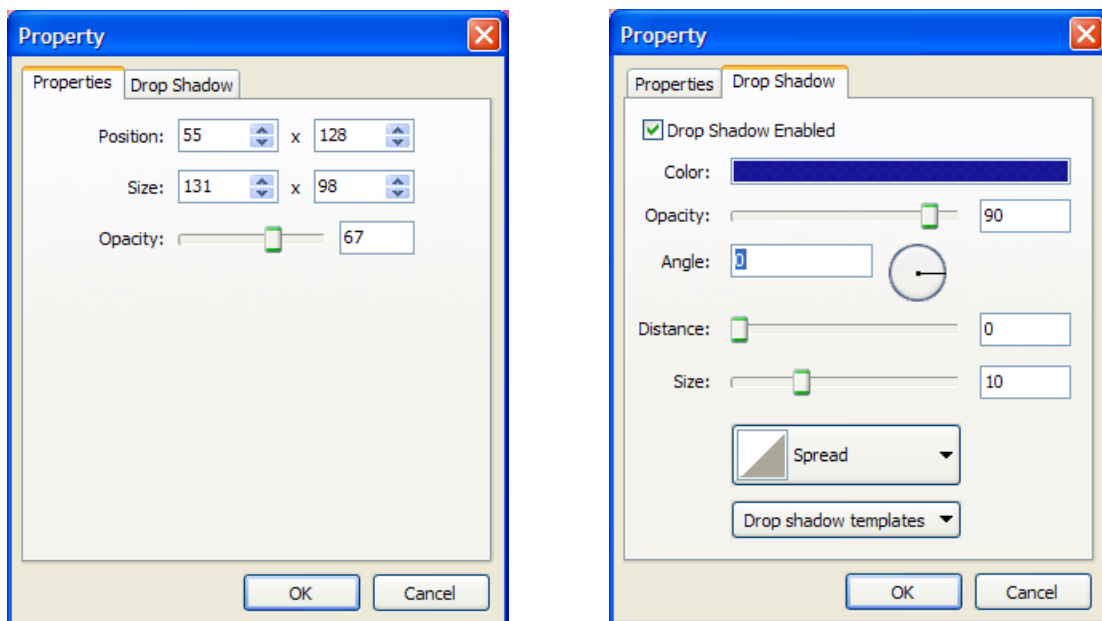
understanding of the difference.

- Then you can customize **Hue**, **Saturation** and **Lightness**. When clicking on these words, the following window will be opened.



The default position is represented here, but you may adjust everything according to your wish by moving the cursors to the right or to the left.

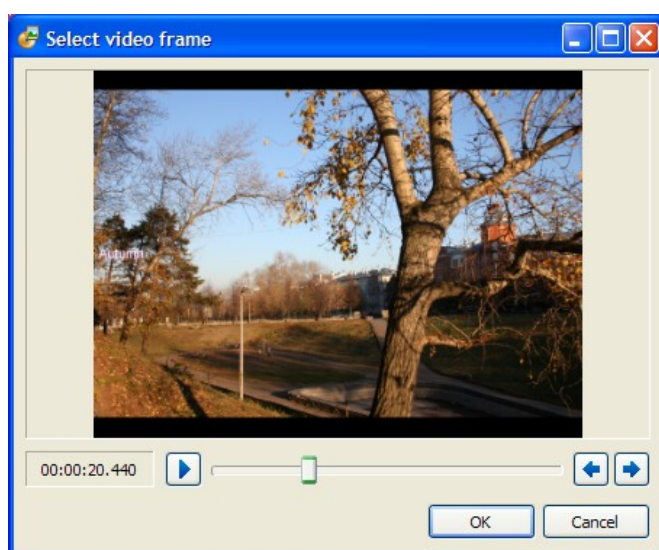
- You can also see two options **Properties** and **Select Frame**, which are greyed out. To highlight and customize them you should click on the project in the menu window. When clicking on the **Properties**, the next window will appear, where there are two tabs: **Property** and **Drop Shadow** Tabs.



In the **Property** tab you may set the **position** and the **size** of the project window by clicking on the small blue arrows. You can also customize **Opacity**, if you wish.

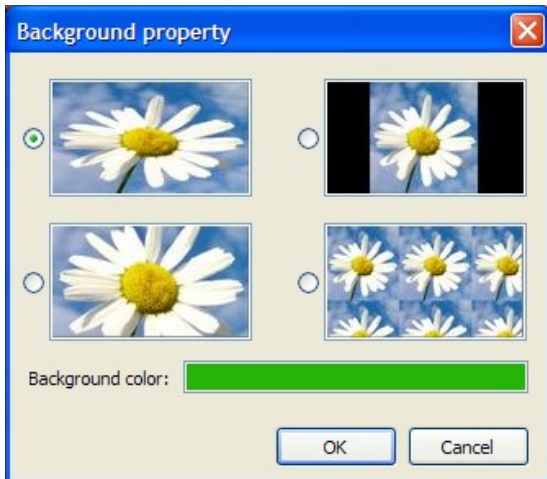
In the **Drop Shadow** Tab you can add and customize shadow to the project window, if you wish. You may adjust the **colour**, **opacity** and **Angle** of the shadow, **distance** from the window, **size** and **shape** of it. You may also add some **shadow templates** to your wish.

In the **Select frame** option you can choose the picture, which you want to see in the project in the menu window. You can scan the project with the help of the **Play** button and **stop** at the necessary image. This image will be represented in the project window.




- After that you can choose **background image** and **customize** it. When clicking on the folder beside this option, the window will appear and you may select the image from your computer.

When clicking on the **Customize** button, the next window will be opened.




Here you can select the **location** of the **background**: **tilled**, **centered** and so on. The examples are given in the figure beside. You may also choose **background colour**, but you should remember, that you will see it only if the image doesn't occupy the whole screen.

- Next you can customize **Animated Menu** and **Menu Duration**. The **default** duration of the menu is **10 seconds** but you may set the time you wish with the help of small blue arrows beside.
- The last point here is adding **music**. If you wish music to your menu, you should check the box and the option will be highlighted. Clicking on the folder, you may choose the sound track from your computer and then customize it.

Above the preview window you can see the arrows of different form. The first two mean **Previous** and **Next Page**. 

They are greyed out in our example as we have only one project. If you have more than one project, in this case, you will have more than one page and the suitable buttons will appear on the menu.

The next two buttons **Redo/Undo** give you an opportunity to make some changes, if you want to correct something in your menu. 

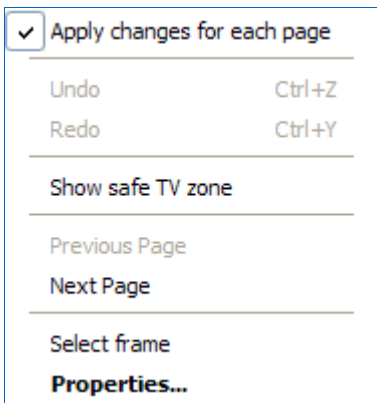
Nearby **Redo/Undo** buttons you can see the **Scale** button, with the help of which you can change the **size** of the preview window, if you want to customize it and you need another scale. The default is **Auto**. But you may select from **10%** to **500%** of the screen.

As you can see from the figure below, the preview window is surrounded by dark blue rectangle, which shows safe TV zone.



In the first picture you can see this rectangle, which determines the zone you won't see on your TV. In the second picture you can't see this zone, you just see the whole picture on you monitor. It is

recommended to show TV zone, because it is more convenient to adjust your menu watching this zone. But if you want to switch this option off for some reason, then you should rightclick on the menu and the following box will be opened.



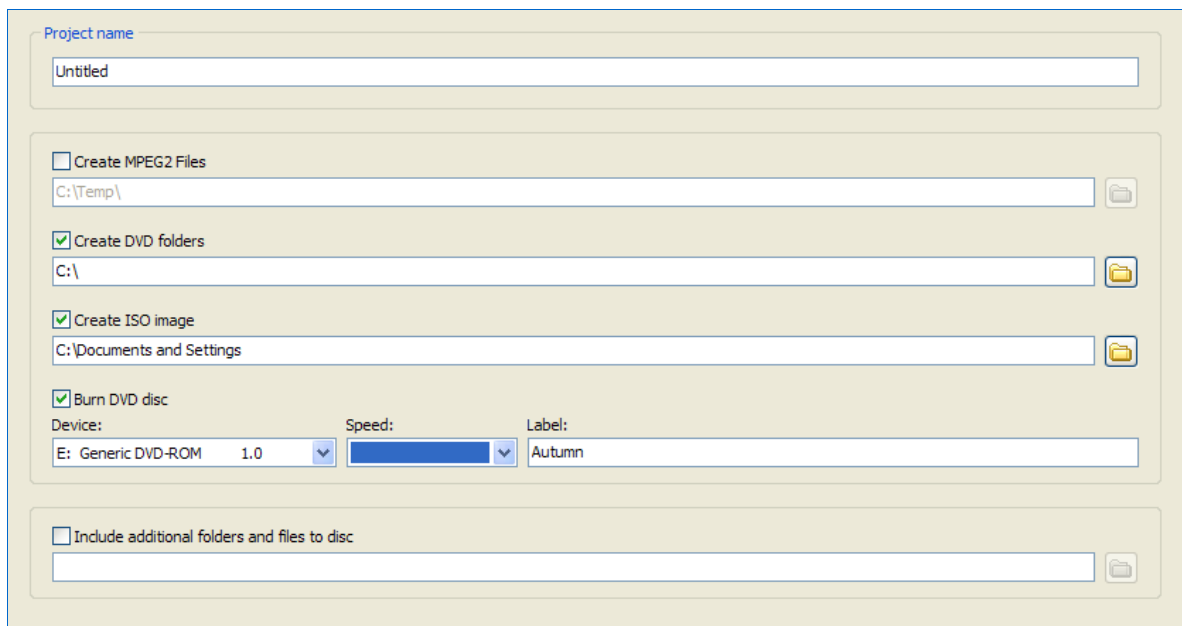
This dialog box is the same as **Edit menu** of this window. So you have two ways of opening it: by rightclicking on the preview window and by clicking on the Edit menu in the left upper corner of the main window.

You can see several options here, almost all of them have been described already.

Apply changes for each page is the option, which helps you to make all changes very quickly. If you have more than one project and more than one page in the menu and you have done some changes on the first or second page, for a example, you can click on this option and these changes will be applied for all pages.

When having adjusted this window, press the button **Next** to go to the next step.

When clicking, the following window for burning the disc will be opened.



- First you can enter the **name** of your **project**. In our example the project is **untitled**, but in your project you can click on this word and enter any name you wish.
- If you wish you can create **MPEG2 Files**, **DVD Folders** and **ISO image** of your project. Check the boxes and just choose the folders for them on your computer.
- In **Burn DVD disc** option the **device** and the **speed** of burning is determined automatically. Of course, if you have several burning devices, you can choose among them.
- You may also include any additional folders and files to the disc, if you want. For doing this, you should check the box and clicking on the folder select the files from your computer.

Having done all this, press the button **Start** in the right lower corner of the window.

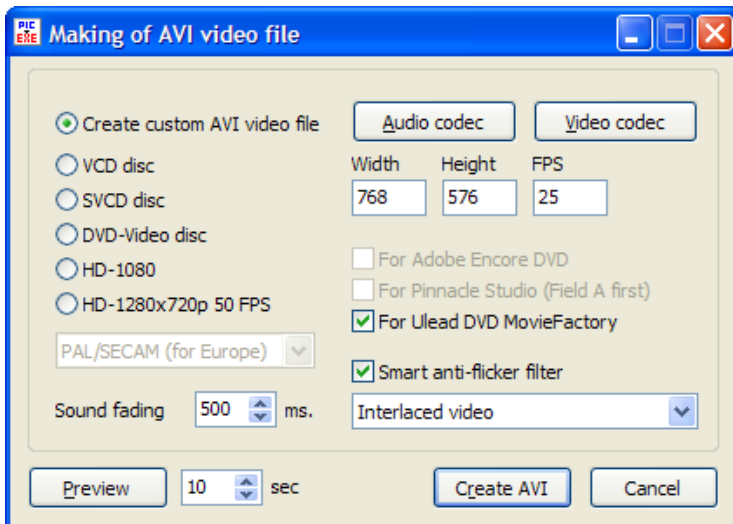
Create AVI video file

If you want to create **AVI video file** instead of DVD video disc, you should choose this button in the

following box, which will appear, if you click **Video** button in the **Control buttons**.



When clicking this button **Create AVI file**, the following dialog box will be opened.



- First you can select what file or disc to create. If you want to create **AVI video file**, first you should make some adjustments. But if you want to select among other variants, you'd better understand the difference between them.

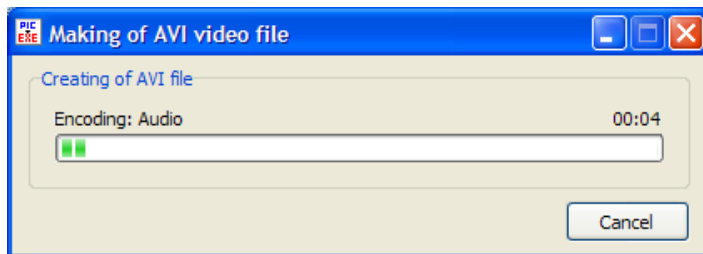
- **VCD** (also called video CD, video compact disc or "disc") is a format specifically designed to hold **MPEG-1** video data and to include interactive capabilities. **VCD** has a resolution similar to that of VHS, which is far short of the resolution of DVD format. Each **VCD** disc holds 72-74

minutes of video and the **bit rate** is **1.44 Mbps**. **VCDs** can be played on a VCD player connected to a television set (in the same way that video cassettes can on a VCR) or computer, on a CD player, on some CD-ROM drives and some DVD players.

- **SVCD disc** (the Super Video CD) standard upgrades the Video-CD format. It utilizes better Video and Audio quality. It also standard includes extensions for surround sound multi-channel audio, provisions for PC playback. It's also based on variable bit rate (VBR) **MPEG-2** coding for more efficient use of disc capacity. The **bit rate** is up to **2.6 Mbps**.
- **DVD-Video disc** (Digital Video Disc) is a popular **optical disc storage media format**. Its main uses are video and data storage. Most DVDs are of the same dimensions as compact discs but store more than 6 times as much data. The capacity is from **4.7 Gb** on a **single-sided single-layer disc** up to **8.54 Gb** on a **single sided double-layer disc**.
- **HD-1080p** (High Definition) is the name for a category of display resolutions. The number "1080" represents 1,080 lines of vertical resolution, while the letter **p** stands for progressive scan (meaning the image is not interlaced). 1080p is considered a **HDTV video mode**. The term usually assumes a widescreen **aspect ratio** of **16:9**, implying a horizontal resolution of 1920 pixels. This creates a frame resolution of 1920×1080 or 2,073,600 pixels in total. The frame rate in Hertz can be either implied by the context or specified after the letter p, such as **1080p30**, meaning 30 Hz.
- **HD-1280x720p** is another high definition format, the difference with the previous format is in the number of lines.

It is important to note, that when changing the format, the window will also be changed. It depends on the number of programs, which support this format. If the program doesn't support the certain format, it is greyed out for every certain format.

- Next you should choose **TV system parameters**, if you select one of 5 formats, except AVI video file. If you live in **Canada**, the **USA**, **Japan**, you should select **NTSC**. If you live in **Europe**, select **PAL/SECAM**.
- The default of **Sound Fading** is **500 ms.**, but if you want you may change it.
- After that, if you want, you may choose **Audio** and **Video codecs**. **Codec** is a special device, which is used to compress data, in this case, music (**audio**) and **video**. It is important to note, that the quality of sound and video is not changed, only their size is reduced. When you press the buttons **Audio** and **Video Codec**, you can select the necessary program for compression manually, but the program always does it automatically.
- The next three windows here denote the **number** of **vertical** and **horizontal lines** and the **number** of **frames per second (FPS)**. You can also change it manually, but it is better to set the default settings here.
- You may see the **preview** button here and set the time (the number of seconds), which you want to preview. The **default** is **10 seconds** here.
- At last you should press **Create AVI** or **Cancel**, if you don't want to create anything.
- When you press **Create AVI** button, the dialog box for saving it will be opened and after that, the following dialog box will be opened.



When creating process is finished, burn this AVI file on the disc.

Hotkeys

F1 – Help

F2 – Rename

F3 – Fullscreen View (File Panel)

F4 – Fullscreen View (Slide List)

F5 – Preview

F7 – Create Screensaver...

F8 – Create Slideshow As...

F9 – Create Slideshow

F10 – Exit

Alt+B – Create Backup in ZIP

Alt+F – Rotate counterclockwise

Alt+I – Ignore Objects Not Selected

Alt+R – Random Order

Alt+S – Replace Main Image

Shift+F1 – Burn DVD-Video Disc...

Shift+F2 – Create AVI file...

Shift+PageUp – Bring to Front

Shift+PageDown – Send to Back

Ctrl+1 – File Panel as Thumbnails

Ctrl+2 – Slide List as Thumbnails

Ctrl+3 – Text or Hyperlink

Ctrl+4 - Button

Ctrl+5 – Frame

Ctrl+F1 – Classic View

Ctrl+F2 – Horizontal View

Ctrl+F3 – Vertical View

Ctrl+F4 – File Name

Ctrl+F5 – File Extension

Ctrl+F6 – File Date

Ctrl+F7 – File Size

Ctrl+F8 – Unsorted File

Ctrl+F9 – Create Slideshow and Run

Ctrl+F11 – Zoom In

Ctrl+F12 – Zoom Out

Ctrl+A – Select All Pictures

Ctrl+B – Objects and Animation

Ctrl+C – Copy Slide

Ctrl+D – Add All Pictures to Slide List
Ctrl+E – Manage Templates
Ctrl+F – Rotate Clockwise
Ctrl+G – Show Tree
Ctrl+H – Shift Timeline Points
Ctrl+L – Timeline
Ctrl+M – Set Comments on All Slides
Ctrl+N – New
Ctrl+O – Open
Ctrl+P – Project Options
Ctrl+R – Start Preview from the Current Slide
Ctrl+S – Save
Ctrl+Shift+S – Save As...
Ctrl+T – Set Time of Points
Ctrl+U – Customize Current Slide
Ctrl+U – File Info
Ctrl+V – Paste Slide
Ctrl+W – Open Picture
Ctrl+X - Cut
Ctrl+Y – Redo
Ctrl+Z – Undo

Ctrl+Home – Move to Top
Ctrl+End – Move to End
Ctrl+PageUp – Forward One
Ctrl+PageDown – Back One

Ins – Add Keypoint Here
Ins – Clone Keypoint
Ins – New Transition

Del - Delete

Glossary of Necessary Terms

«A»

Animation is the rapid display of a sequence of images of 2-D artwork or model positions in order to create an illusion of movement. It is an optical illusion of motion due to the phenomenon of persistence of vision, and can be created and demonstrated in a number of ways. The most common method of presenting animation is as a motion picture or video program, although several other forms of presenting animation also exist.

Antialiasing is the technique of minimizing the distortion artifacts known as aliasing when representing a high-resolution signal at a lower resolution. In the image domain, aliasing artifacts can appear as wavy lines or bands, or moire patterns, or popping, strobing or as unwanted sparkling; in the sound domain, as rough, dissonant, or spurious tones, or as noise. Anti-aliasing is used in digital photography, computer graphics, digital audio and many other domains.

Aspect Ratio of a two-dimensional shape is the ratio of its longer dimension to its shorter dimension. The aspect ratio of an image is its displayed width divided by its displayed height.

Audio Codec is a hardware device or a computer program that compress/decompress digital audio data according to a given audio file format or streaming audio format. The term codec is a combination of 'coder-decoder'. The object of a codec algorithm is to represent the high-fidelity audio signal with minimum number of bits while retaining the quality. This can effectively reduce the storage space and the bandwidth required for transmission of the stored audio file. Most codecs are implemented as libraries which interface to one or more multimedia players, such as XMMS, Winamp or Windows Media Player.

Audio format is a medium for storing sound and music. The term is applied to both the physical recording media and the recording formats of the audio content – in computer science it is often limited to the audio file format, but its wider use usually refers to the physical method used to store the data.

AVI-file (Audio Video Interleave) is a multimedia container format introduced by Microsoft as part of its Video for Windows technology. AVI files can contain both audio and video data in a standard container that allows synchronous audio-with-video playback. Like DVDs, AVI files support multiple streaming audio and video, although these features are seldom used.

«B»

Background or desktop picture, is the image or colour displayed on a website or computer desktop behind the visible content.

Bitrate is (sometimes written bit rate, data rate) is the number of bits that are conveyed or processed per unit of time. Bit rate is synonymous with data rate. The bit rate is quantified using the 'bits per second' (bit/s or bps) unit, often in conjunction with a SI prefix such as kilo- (kbit/s or kbps), mega- (Mbit/s or Mbps), giga- (Gbit/s or Gbps) or tera- (Tbit/s or Tbps).

«C»

CD (Compact Disc) is an optical disc used to store digital data, originally developed for storing digital audio. The CD, available on the market since late 1982, remains the standard playback medium for commercial audio recordings to the present day. Standard CDs have a diameter of 120 mm and can hold up to 80 minutes of audio. There are also 80 mm discs, sometimes used for CD singles, which can store up to 24 minutes of audio.

Comment in PicturesToExe is the text, which appears during the showing of images.

«D»

Duration is an amount of time or a particular time interval.

DVD video disc (Digital Video Disc) is a popular **optical disc storage media format**. Its main uses are video and data storage. Most DVDs are of the same dimensions as compact discs but store more than 6 times as much data. The capacity is from **4.7 Gb** on a **single-sided single-layer disc** up to **8.54 Gb** on a **single sided double-layer disc**.

«E»

Effect in PicturesToExe is any comment, transition, animation, pan, zoom and so on.

EXE-file is the common filename extension for denoting an executable file (a program) in different operating systems. Besides the executable program itself, many EXE files contain other components called resources, such as bitmaps and icons which the executable program may use for its graphical user interface.

«F»

File is a block of arbitrary information, or resource for storing information, which is available to a computer program and is usually based on some kind of durable storage. A file is durable in the sense that it remains available for programs to use after the current program has finished. Computer files can be considered as the modern counterpart of paper documents.

FPS (frames per second) is frame rate, or frame frequency, the measurement of the frequency (rate) at which an imaging device produces unique consecutive images called frames. The term applies equally well to computer graphics, video cameras, film cameras, and motion picture systems. Frame rate is most often expressed in frames per second (fps) or simply hertz (Hz).

«H»

Hardware Acceleration is the use of hardware to perform some function faster than it is possible in software running on the normal. Normally, processors are sequential, and instructions are executed one by one. Various techniques are used to improve performance; hardware acceleration is one of them. The main difference between hardware and software is concurrency, allowing hardware to be much faster than software. Hardware accelerators are designed for computationally intensive software code. Depending upon granularity, hardware acceleration can vary from a small functional unit to a large functional block like motion estimation in MPEG2.

HD-1080 (High Definition) is the name for a category of display resolutions. The number "1080" represents 1,080 lines of vertical resolution, while the letter *p* stands for progressive scan (meaning the image is not interlaced). 1080p is considered a **HDTV video mode**. The term usually assumes a widescreen **aspect ratio** of **16:9**, implying a horizontal resolution of 1920 pixels. This creates a frame resolution of 1920×1080 or 2,073,600 pixels in total. The frame rate in Hertz can be either implied by the context or specified after the letter p, such as 1080p30, meaning 30 Hz.

HD-1280x720p is another high definition format, the difference with the previous format is in the number of lines.

HSL is a related representation of points in an RGB color space, which attempt to describe perceptual color relationships more accurately than RGB, while remaining computationally simple. HSL stands for **hue, saturation, lightness**. HSL describes colors as points in a cylinder, whose central axis ranges from black at the bottom to white at the top with neutral colors between them, where angle around the axis corresponds to «hue», distance from the axis corresponds to «saturation» and distance along the axis corresponds to «lightness».

«I»

Icon is (from Greek εἰκών, *eikon*, "image") is an image, picture, or representation; it is a sign or likeness that stands for an object by signifying or representing it, or by analogy, as in semiotics; by extension, icon is also used, particularly in modern popular culture, in the general sense of symbol — i.e. a name, face, picture, edifice or even a person readily recognized as having some well-known significance or embodying certain qualities.

ISO Image (.iso) is a disc image of an ISO 9660 file system. ISO 9660 is an international standard originally devised for storing data on CD-ROM. More loosely, it refers to any optical disc image. As is typical for disc images, in addition to the data files that are contained in the ISO image, it also contains all the filesystem metadata, including boot code, structures, and attributes. All of this information is contained in a single file. These properties make it an attractive alternative to physical media or the distribution of software, that requires this additional information as it is simple to retrieve over the Internet.

«J»

JPEG is a commonly used method of compression for photographic images. The name JPEG stands for **Joint Photographic Experts Group**, the name of the committee that created the standard. JPEG is distinct from MPEG (Moving Picture Experts Group), which produces compression schemes for video. The JPEG standard specifies both the codec, which defines how an image is compressed into a stream of bytes and decompressed back into an image, and the file format used to contain that stream. The compression method is usually lossy compression, meaning that some visual quality is lost in the process and cannot be restored, although there are variations on the standard baseline JPEG that are lossless. There is also an interlaced «Progressive JPEG» format, in which data is compressed in multiple passes of progressively higher detail. This is ideal for large images that will be displayed whilst downloading over a slow connection, allowing a reasonable preview after receiving only a portion of the data. However, progressive JPEGs are not as widely supported.

«L»

Lossless Compression is a class of data compression algorithms, that allows the exact original data to be reconstructed from the compressed data. This can be contrasted to lossy data compression, which does not allow the exact original data to be reconstructed from the compressed data. Lossless data compression is used in many applications. For example, it is used in the popular ZIP file format and in the Unix tool gzip. It is also often used as a component within lossy data compression technologies. Lossless compression is used when it is important that the original and the decompressed data be identical, or when no assumption can be made on whether certain deviation is uncritical.

«M»

Midi (Musical Instrument Digital Interface) is an industry-standard protocol that enables electronic musical instruments and other equipment to communicate, control and synchronize with each other. MIDI does not transmit an audio signal or media — it simply transmits digital data "event messages" such as the pitch and intensity of musical notes to play, control signals for parameters such as volume, vibrato and panning, cues and clock signals to set the tempo. As an electronic protocol, it is notable for its success, both in its widespread adoption throughout the industry, and in remaining essentially unchanged in the face of technological developments since its introduction in 1983.

Mode is a distinct setting within a computer program or any physical machine interface, in which the same user input will produce perceived different results than it would in other settings. The best-known modal interface components are probably the Caps Lock and Insert keys on the standard computer keyboard, both of which put the user's typing into a different mode after being pressed, then return it to the regular mode after being re-pressed.

MPEG-1 defines a group of Audio and Video (AV) coding and compression standards agreed upon by MPEG (**Moving Picture Experts Group**). MPEG-1 video is used by the Video CD (VCD) format and less commonly by the DVD-video format. The quality at standard VCD resolution and bitrate is near the quality and performance of a VHS tape. MPEG-1, Audio Layer 3 is the popular audio format known as MP3.

MPEG-2 is a standard for "the generic coding of moving pictures and associated audio information". It describes a combination of lossy video compression and lossy audio data compression methods, which permit storage and transmission of movies using currently available storage media and transmission bandwidth. MPEG-2 is widely used as the format of digital television signals that are broadcast by terrestrial (over-the-air), cable and direct broadcast satellite TV systems. It also specifies the format of movies and other programs that are distributed on DVD and similar discs, such as TV stations, TV receivers, DVD players and other equipment are often designed to this standard. MPEG-2 was the second of several standards developed by the Moving Pictures Expert Group.

«N»

Navigation Bar (also known as links bar or link bar) is a subregion of a web page, that contains

hypertext links in order to navigate between the pages of a website. Since it usually appears on all or at least on several pages of a website it is one of the key design-elements of websites.

NTSC is the analog television system in use in the United States, Canada, Japan, Mexico, the Philippines, South Korea, Taiwan and some other countries, mostly in the Americas. It is named for the **National Television System Committee**, the U.S. standardization body which adopted it.

«O»

Object in PicturesToExe is any image, file, frame, comment, text or button in the Object List.

OGG is an open standard for a free container format for digital multimedia, unrestricted by software patents and designed for efficient streaming and manipulation. The name 'Ogg' refers to the file format, which can multiplex a number of separate independent free and open source codecs for audio, video, text (such as subtitles) and metadata. The term 'Ogg' is often used to refer to Audio File Format OGG Vorbis, that is, Vorbis-encoded audio in the Ogg container.

Opacity is the state of being impenetrable to light. An opaque object is neither transparent (allowing all light to pass through) nor translucent (allowing some light to pass through). When light strikes an interface between two substances, some of the light is reflected, some is absorbed, and the rest is transmitted.

«P»

PAL (Phase Alternating Line) is a colour encoding system used in broadcast television systems in large parts of the world. Other common analog television systems are SECAM and NTSC. PAL was developed by Walter Bruch at Telefunken in Germany. The format was first unveiled in 1963, with the first broadcasts beginning in the United Kingdom and Germany in 1967.

PDF (Portable Document Format) is the file format, created by Adobe Systems in 1993 for document exchange. PDF is fixed-layout document format used for representing two-dimensional documents in a manner independent of the application software, hardware, and operating system. Each PDF file encapsulates a complete description of a 2-D document (and with Acrobat 3-D, embedded 3-D documents) that includes the text, fonts, images, and 2-D vector graphics, that compose the document.

PNG (Portable Network Graphics) is a bitmapped image format, that employs lossless data compression. PNG was created to improve upon and replace the GIF format, as an image-file format not requiring a patent license. PNG supports palette-based (palettes of 24-bit RGB colors) or greyscale or RGB images.

Preview may be where output of a particular document, page, film, etc. is displayed before it is produced in its final form. In the case of printed material this is known as a print preview.

PTE is the abbreviation from PicturesToExe and is also the extension of projects, made in PicturesToExe.

«R»

RGB is an additive colour model, in which red, green and blue light are added together in various ways to reproduce a broad array of colours. The name of the model comes from the initials of the three additive primary colours: **red**, **green**, and **blue**. The term **RGBA** is also used to mean Red, Green, Blue, Alpha. This is not a different color model, but a representation; the Alpha is used for transparency. The RGB colour model itself does not define what is meant by 'red', 'green' and 'blue' colorimetrically, and so the results of mixing them are not specified as exact, but relative.

Rotate is to move about an object in a circular motion. A two-dimensional object rotates around a center of rotation. A three-dimensional object rotates around a line called an axis. If the axis of rotation is within the body, the body is said to rotate upon itself, or spin.

«S»

Screensaver is a type of computer program initially designed to prevent «Phosphor Burn-in» on computer monitors by blanking the screen or filling it with moving images or patterns when the computer is not in use. Today, screensavers are also used for entertainment or security purposes.

SECAM (Séquentiel couleur à mémoire, French for «**Sequential Color with Memory**»), is an analog color television system first used in France. A team led by Henri de France, working at Compagnie Française de Télévision (later bought by Thompson), invented SECAM. It is, historically, the first European color television standard.

Slide in PicturesToExe is the image, which you use in the project and can see on the screen.

Slide List is the list of images, which you use in the project.

Slide show is a display of a series of chosen images, which is done for artistic or instructional purposes. It is becoming more common to see digital slideshows. Slideshows custom made for people using their photos, music, wedding invitations, birth announcements, or virtually any other documents that can be scanned. Some people are calling these DVD's the new photo montage or DVD slideshows.

SVCD disc (the **Super Video CD**) standard upgrades the Video-CD format. It utilizes better Video and Audio quality. It also standard includes extensions for surround sound multi-channel audio, provisions for PC playback. It's also based on variable bit rate (VBR) **MPEG-2** coding for more efficient use of disc capacity. The **bit rate** is up to **2.6 Mbps**.

«**T**»

Template, when used in the context of file format refers to a common feature of many software applications, that define a unique file format intended specifically for that particular application. Template file formats are those, whose file extensions indicates, that the file type is intended as a starting point from which to create other files.

Thumbnails are reduced-size versions of pictures, used to make it easier to scan and recognize them, serving the same role for images as a normal text index does for words.

Timeline is the presentation of time of images and music and their synchronization.

TV System (analog television system) includes several components: a set of technical parameters for the broadcast signal, a system for encoding color, and possibly a system for encoding multi-channel audio. In digital television all of these elements are combined in a single digital transmission system.

«**V**»

Video Codec is a device or software, that enables video compression and/or decompression for digital video. The compression usually employs lossy data compression. Historically, video was stored as an analog signal on magnetic tape. Around the time when the compact disc entered the market as a digital-format replacement for analog audio, it became feasible to also begin storing and using video in digital form, and a variety of such technologies began to emerge.

VCD (also called video CD, video compact disc or "disc") is a format specifically designed to hold **MPEG-1** video data and to include interactive capabilities. **VCD** has a resolution similar to that of VHS, which is far short of the resolution of DVD format. Each **VCD** disc holds 72-74 minutes of video and the **bit rate** is **1.44 Mbps**. **VCDs** can be played on a VCD player connected to a television set (in the same way that video cassettes can on a VCR) or computer, on a CD player, on some CD-ROM drives and some DVD players.

«**W**»

WAV (or **WAVE**) is an audio file format standard for storing audio on computers. It is the main format used on Windows systems for raw audio. Though a WAV file can hold compressed audio, the most common WAV format contains uncompressed audio in the pulse-code modulation PCM format. PCM audio is the standard audio file format for CDs, containing two channels of 44,100 samples per second, 16 bits per sample. Since PCM uses an uncompressed, lossless storage method, which keeps all the samples of an audio track, professional users or audio experts may use the WAV format for maximum audio quality. WAV audio can also be edited and manipulated with relative ease using software.

Waveform means the shape and form of a signal such as a wave moving in a solid, liquid or gaseous medium. In many cases the medium in which the wave is being propagated does not

permit a direct visual image of the form. In these cases, the term «waveform» refers to the shape of a graph of the varying quantity against time or distance.

WMV (Windows Media Video) is a compressed video file format for several proprietary codecs developed by Microsoft. The original codec, known as WMV, was originally designed for Internet streaming applications.

«Z»

ZIP is a file format, popular data compression and archival format. A ZIP file contains one or more files that have been compressed, to reduce their file size, or stored as-is. The format was originally designed by Phil Katz for PKZIP. However, many software utilities other than PKZIP itself are now available to create, modify, or open (unzip, decompress) ZIP files.

Zoom is decreasing (narrowing) the apparent angle of view of a digital photographic or video image. Digital zoom is accomplished by cropping an image down to a centered area with the same aspect ratio as the original, and usually also interpolating the result back up to the pixel dimensions of the original. It is accomplished electronically, without any adjustment of the camera's optics, and no optical resolution is gained in the process.

Most of the terms are taken from <http://en.wikipedia.org>.

Slide Shows Created in PicturesToExe

Please visit our web site:

<http://www.wnsoft.com/download.htm>

Contacts

Our Web site:

<http://www.wnsoft.com>

Technical support:

<http://www.wnsoft.com/support.htm>